

St. Louis Regional Achievement and Growth Diagnostic

Analysis Compendium
October 2019

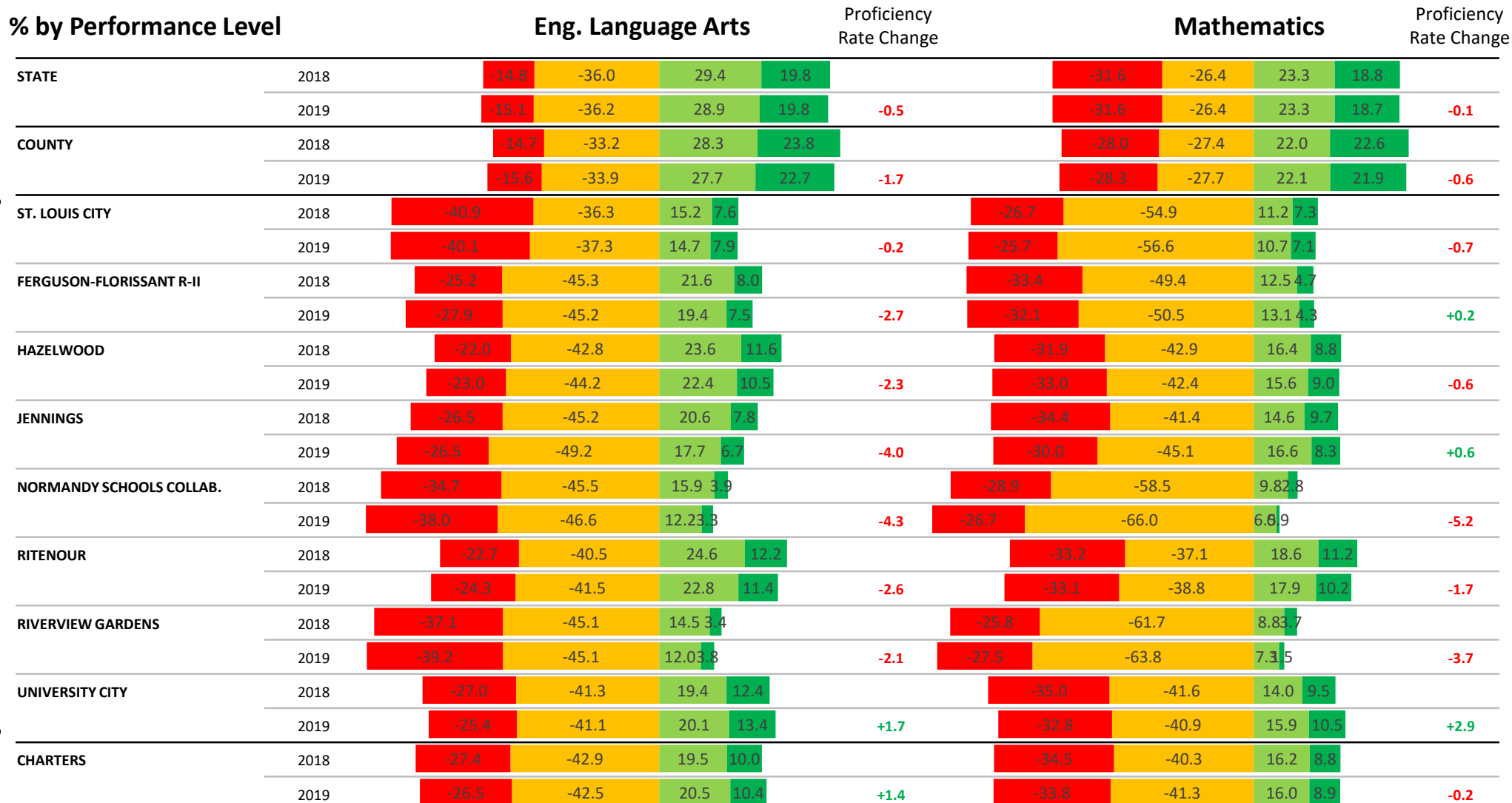


Overall Student Performance:

What is the state of student performance in the region and how is it trending?

Statewide, approximately half of students are proficient in ELA and just over 40% are proficient in math; local high needs districts lag significantly behind the state average in both subjects and mostly saw declines from 2018 to 2019

Among 8 high needs local districts, University City is the only to have posted improvements in both ELA and math, improving proficiency rates by 2 and 3 percentage points, respectively. Schools in St. Louis County declined approximately 2% points in ELA and 1% point in math on average. Additionally, St. Louis charters saw modest improvements in ELA while Ferguson-Florissant and Jennings saw modest improvements in math.



Selected Districts



Basic Below Basic Proficient Advanced

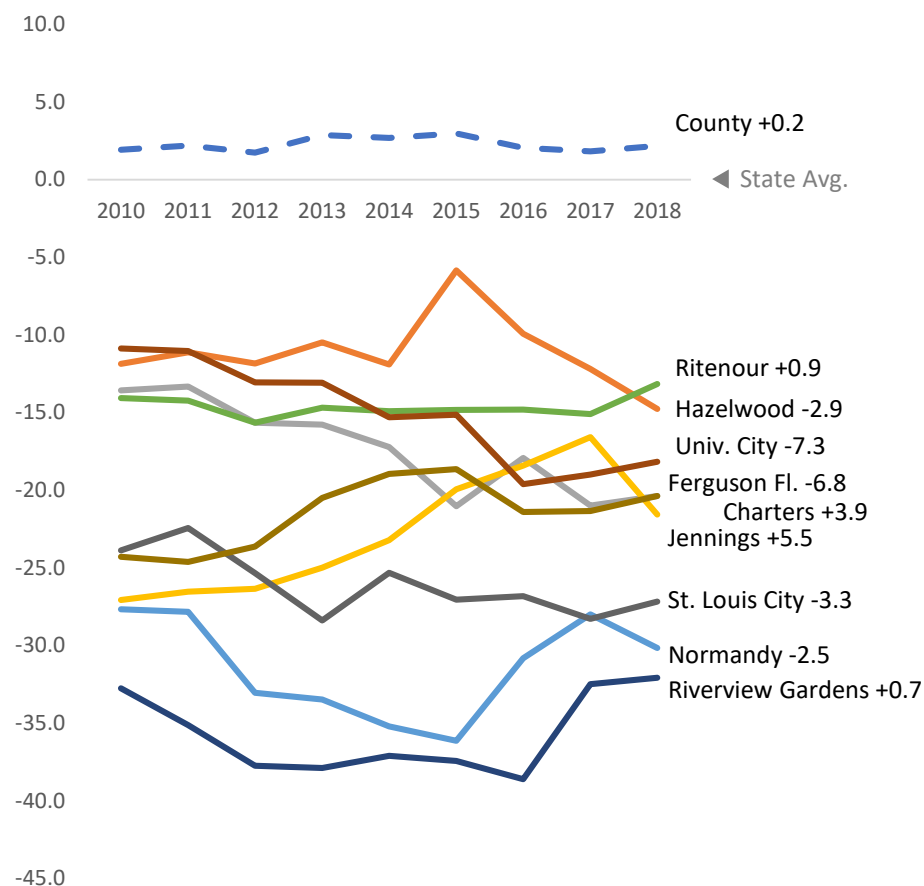
Below Basic Basic Proficient Advanced

Note: Not all St. Louis County districts are included in "selected districts".

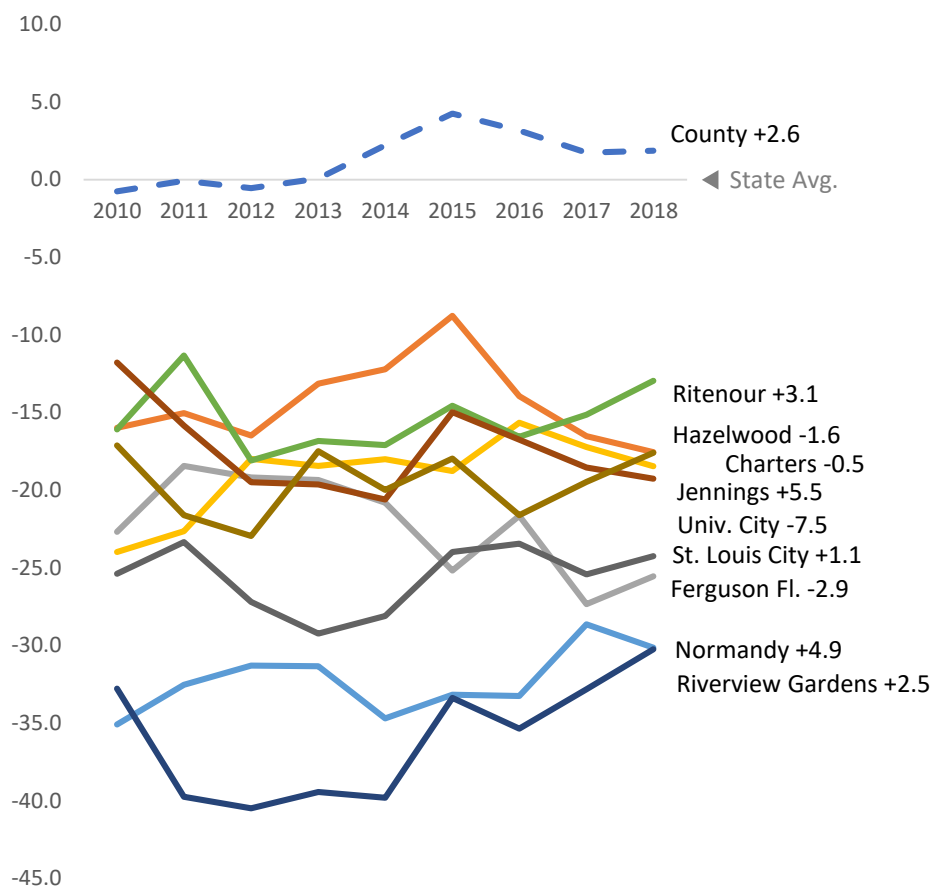
State assessment changes make it difficult to compare progress over the long run, but since 2010, only Jennings has appreciably closed its gap with the state in both subjects

Meanwhile, the St. Louis County average has increased relative to the state during this time, suggesting these selected districts are falling farther behind their County peers.

% Point Distance from State Average Eng. Language Arts



Mathematics

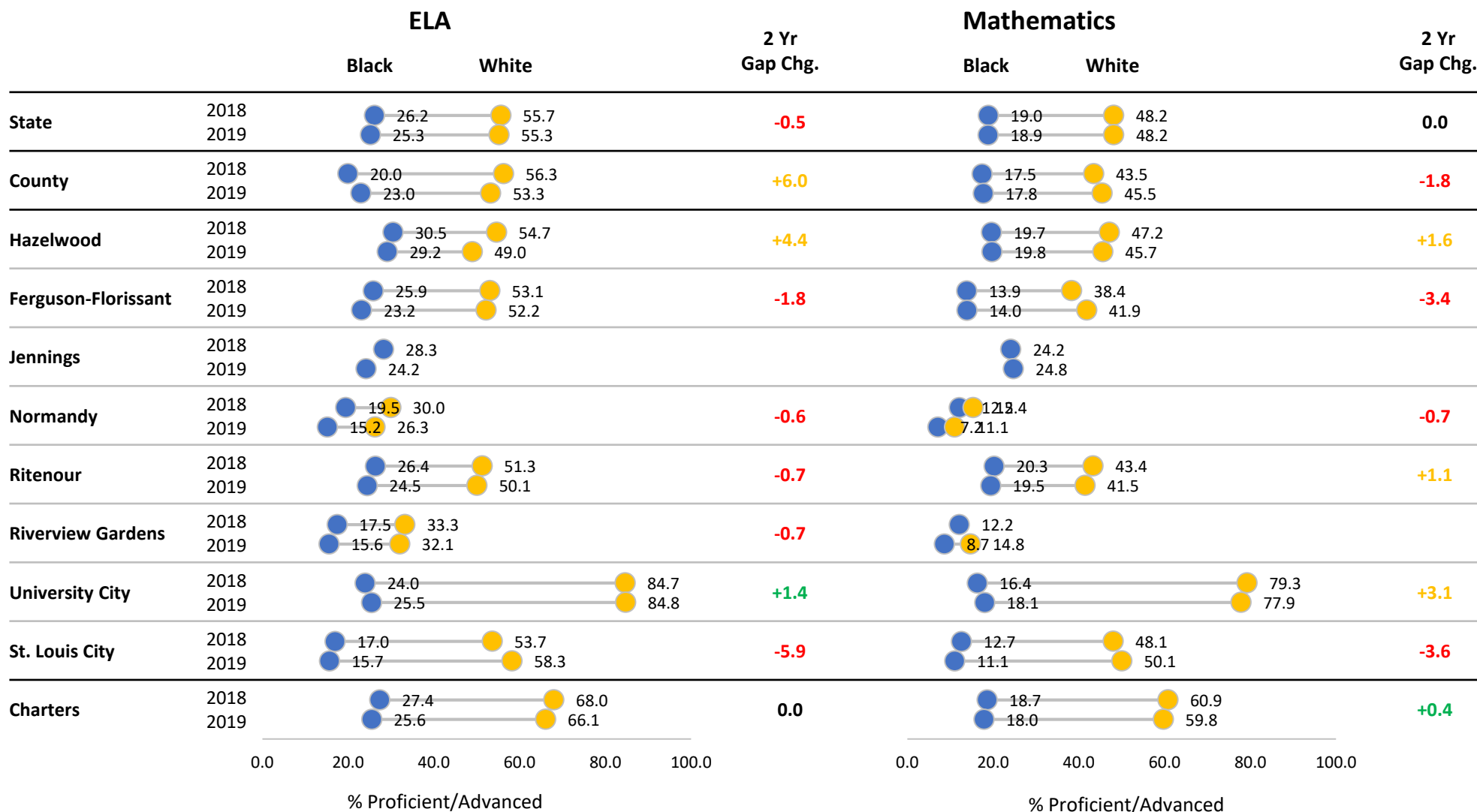


Income Disparities and Racial Achievement Gaps: *To what degree is performance and progress shared among student groups?*

Statewide, black-White achievement gaps in proficiency are large and unchanged from 2018

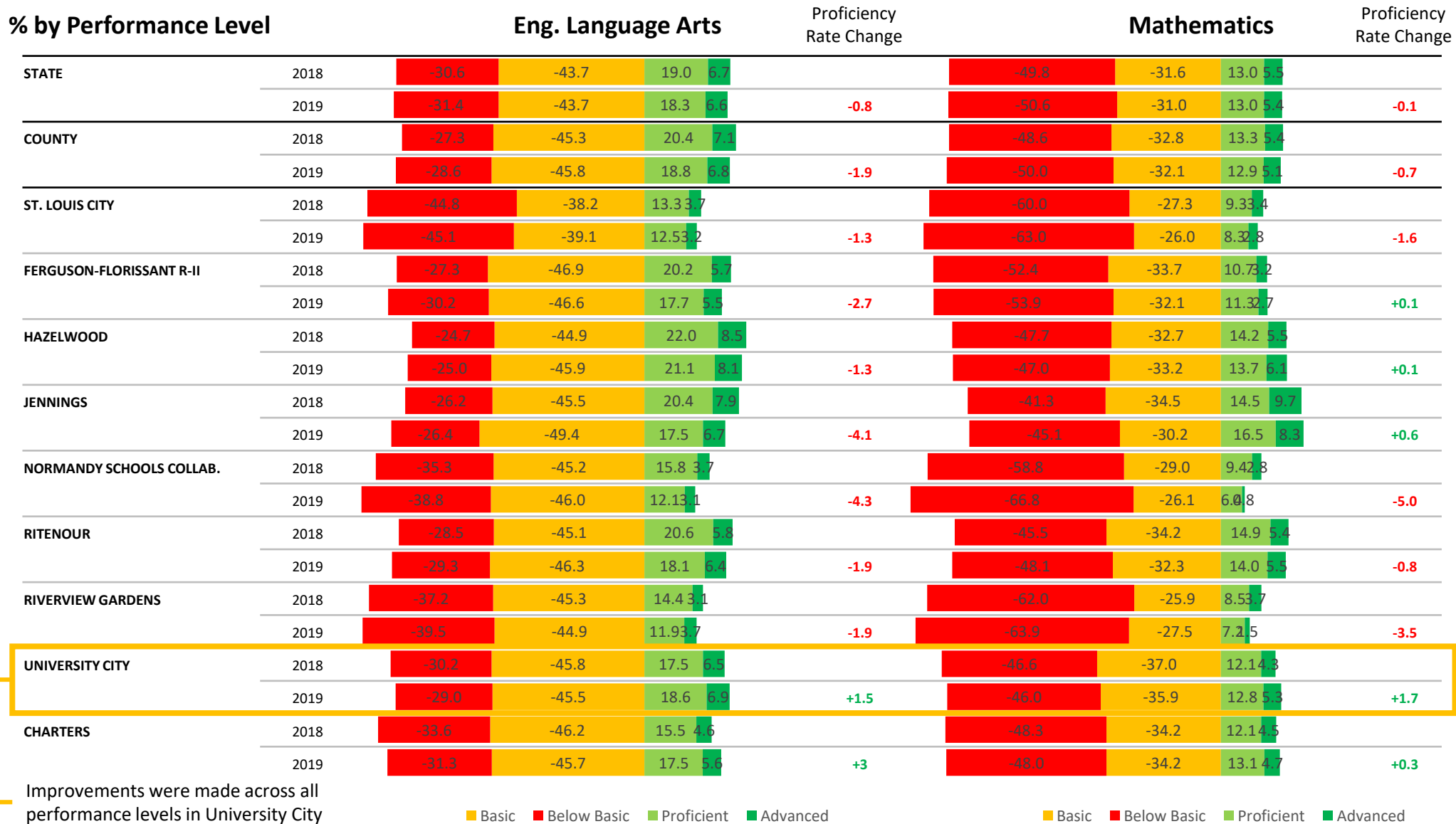
Among selected districts, only Hazelwood, Ritenour (in Mathematics), University City and St. Louis charters (in Mathematics) have closed gaps since last year. The majority of these closures (values shown in orange) are attributable in part to declines among White students' scores. Gaps widened significantly in SLPS compared to last year (by 6 percentage points and 4 percentage points in ELA and math, respectively).

Selected Districts



Black students must make significant improvements to catch up, especially in mathematics, as half statewide and in St. Louis County are scoring at the lowest level of standards mastery

The rate of Black students below basic mastery is nearly two thirds in SLPS, Normandy and Riverview Gardens and increasing.



Improvements were made across all performance levels in University City

Basic Below Basic Proficient Advanced

Basic Below Basic Proficient Advanced

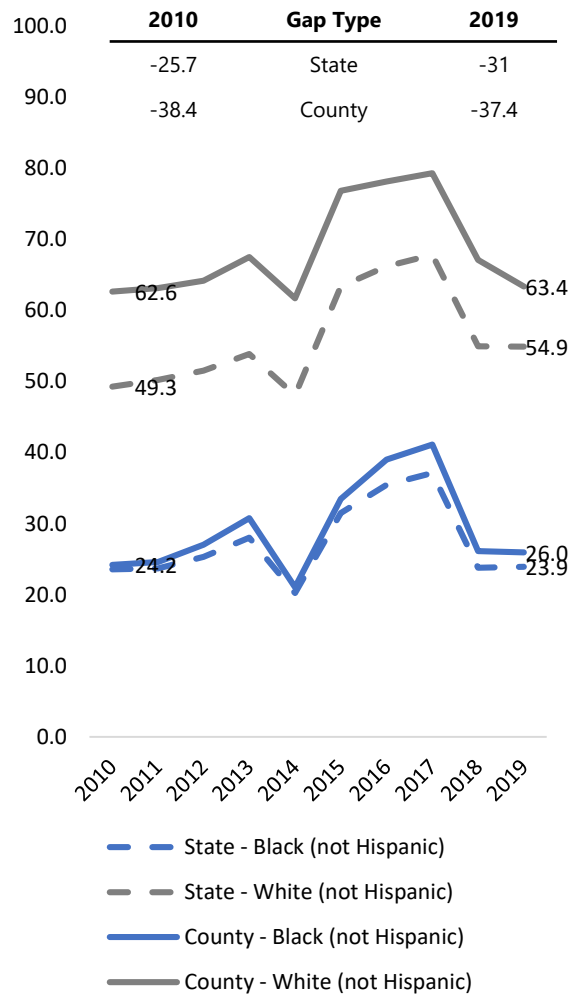


Note: Not all St. Louis County districts are included in "selected districts".

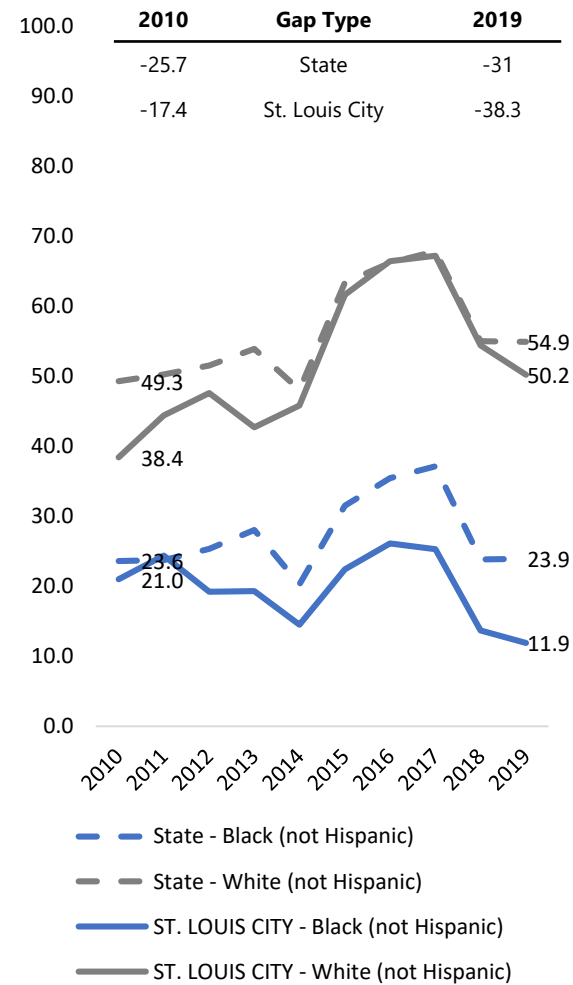
Grade 3 reading is a critical, early indicator of whether or not students are on-track in their learning

By grade 3 (approx. age 8), ELA proficiency rates are nearly 40% points lower among Black students than White students in both St. Louis County and SLPS. The gap is smaller among city charters, but has expanded since 2010 due to the increased performance of white students. The SLPS gap has also widened dramatically (more than doubled) during this time.

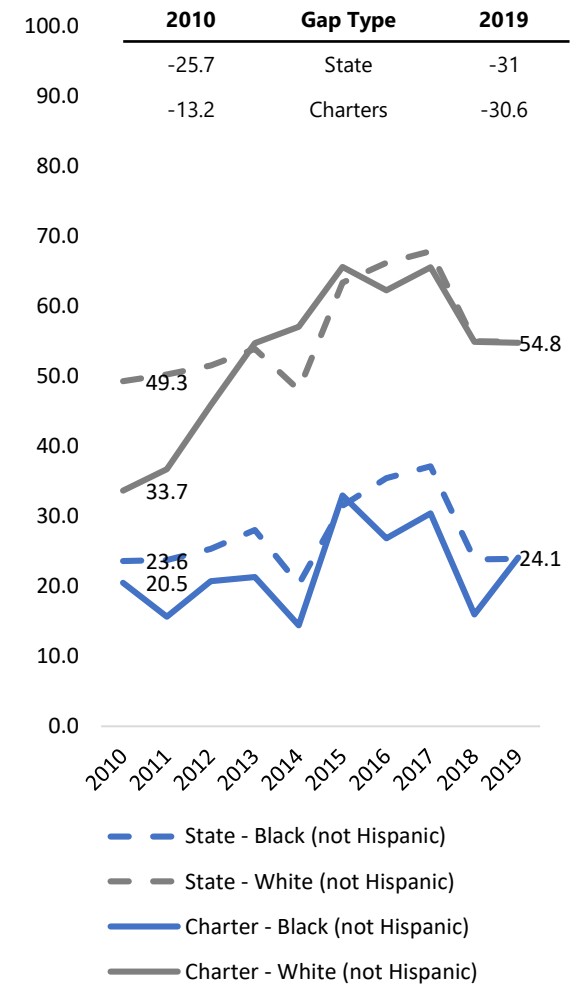
St. Louis County



St. Louis City



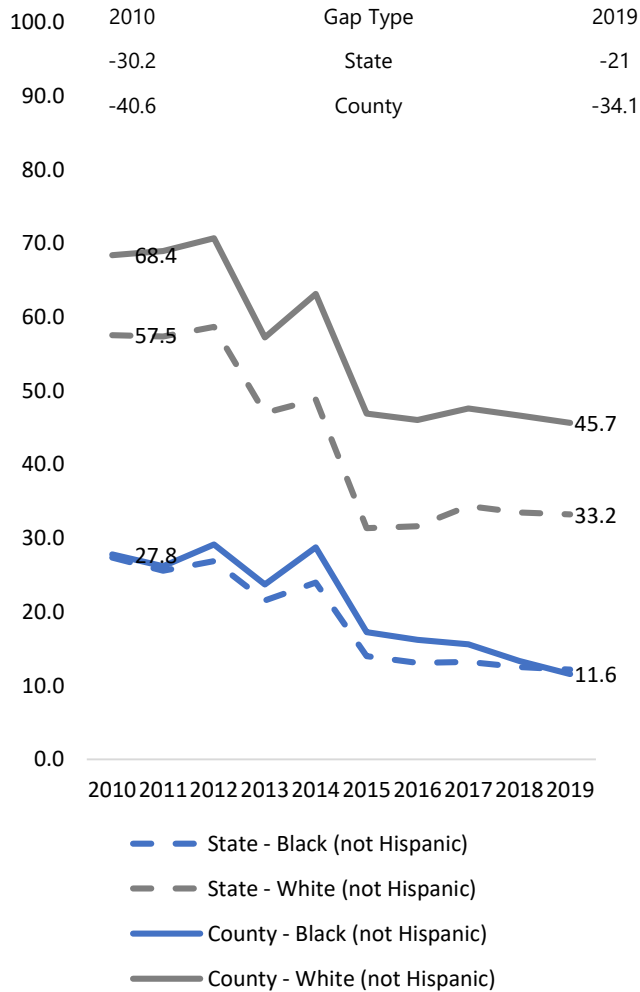
Charters



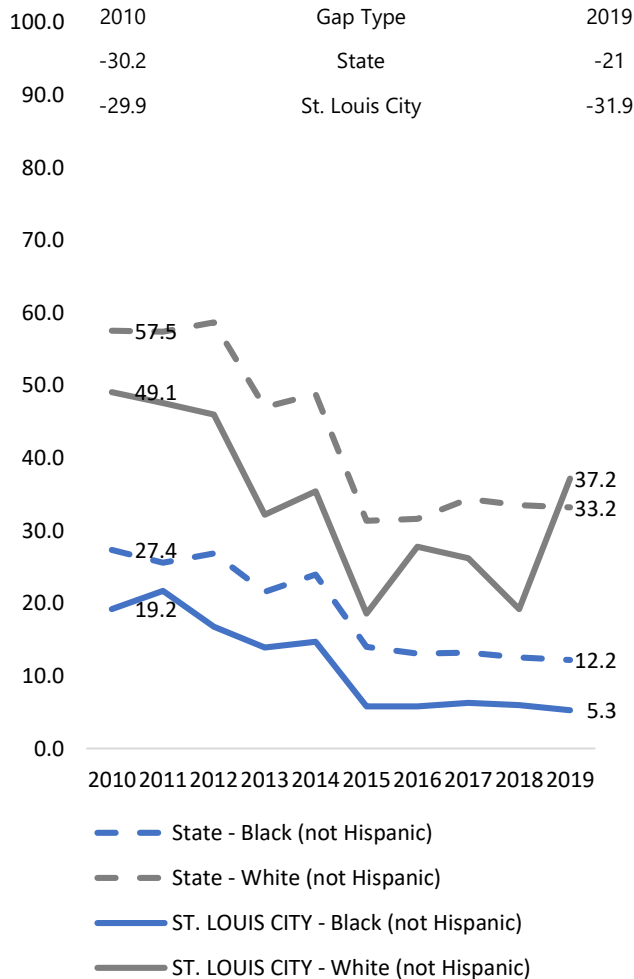
Grade 8 mathematics performance is an important “gateway” indicator assessing students’ readiness for high school coursework

Grade 8 math gaps are slightly smaller than grade 3 reading, but they are still significantly larger in our region than statewide.

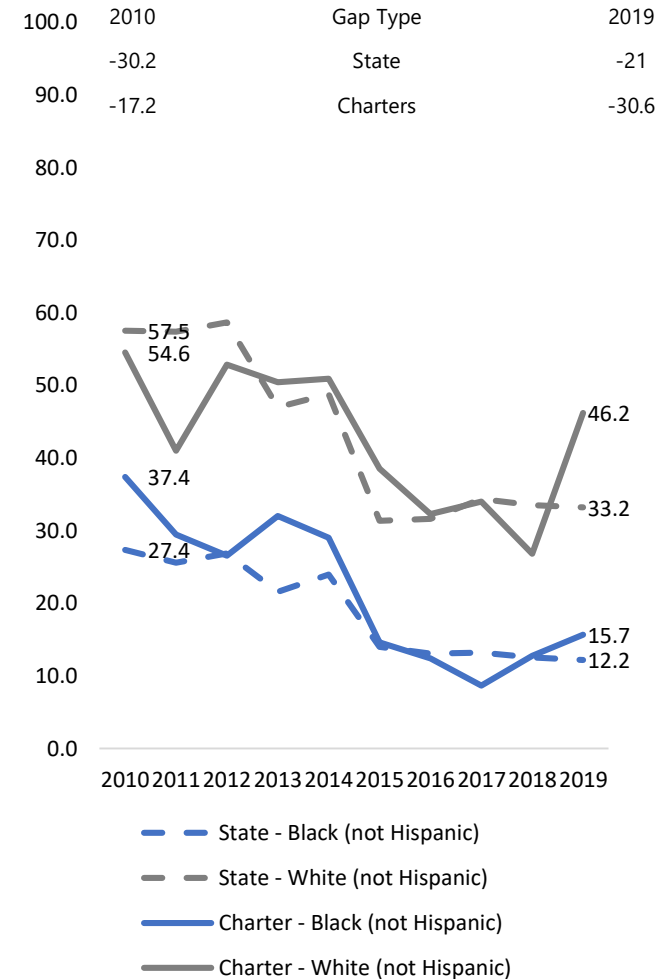
St. Louis County



St. Louis City

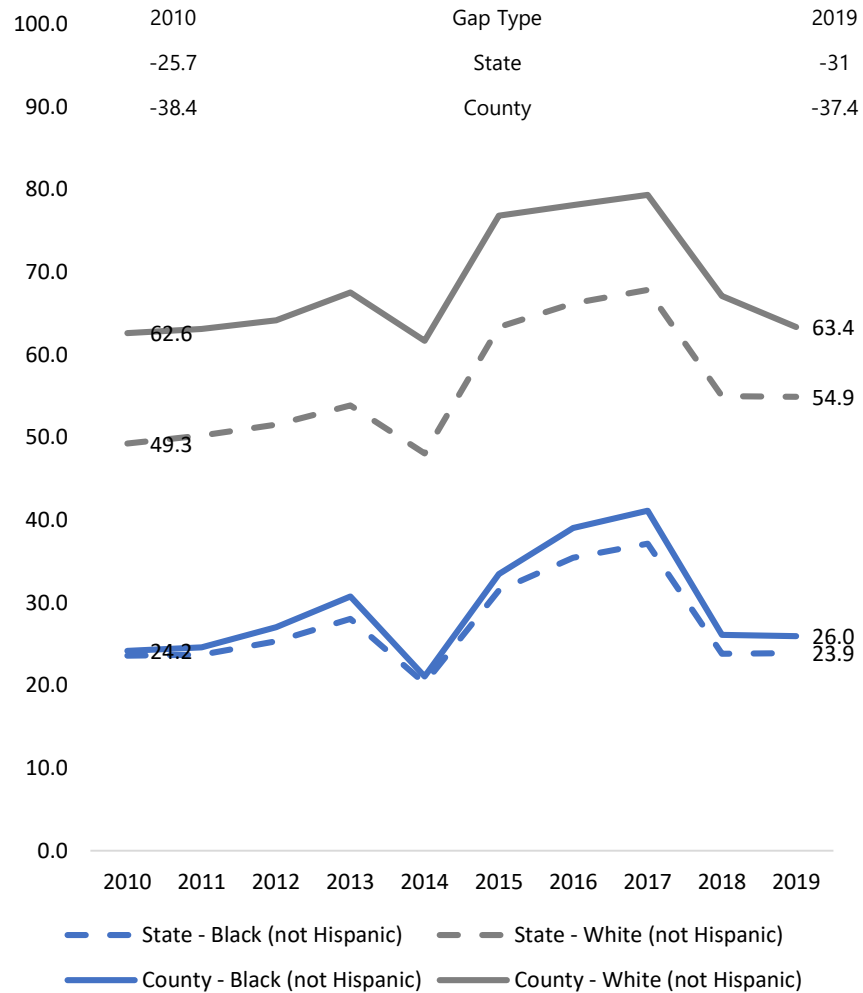


Charters

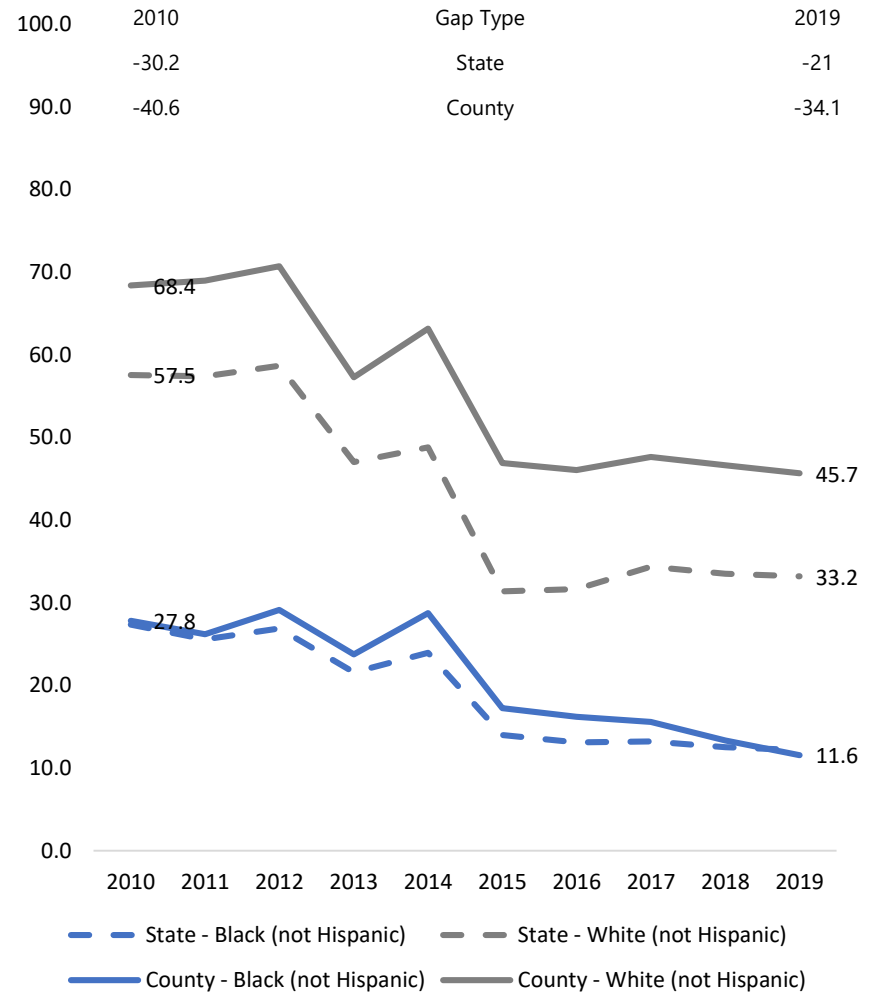


Supplemental Detail: Black-White Gaps Relative to State Average, County

Grade 3 Eng. Language Arts



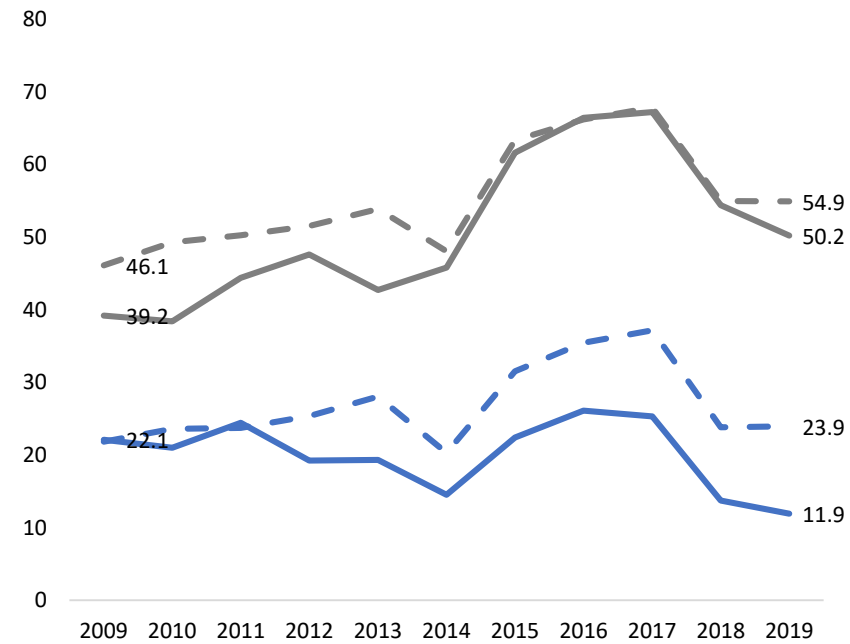
Grade 8 Mathematics



Supplemental Detail: Black-White Gaps Relative to State Average, St. Louis City (with 2009)

Grade 3 Eng. Language Arts

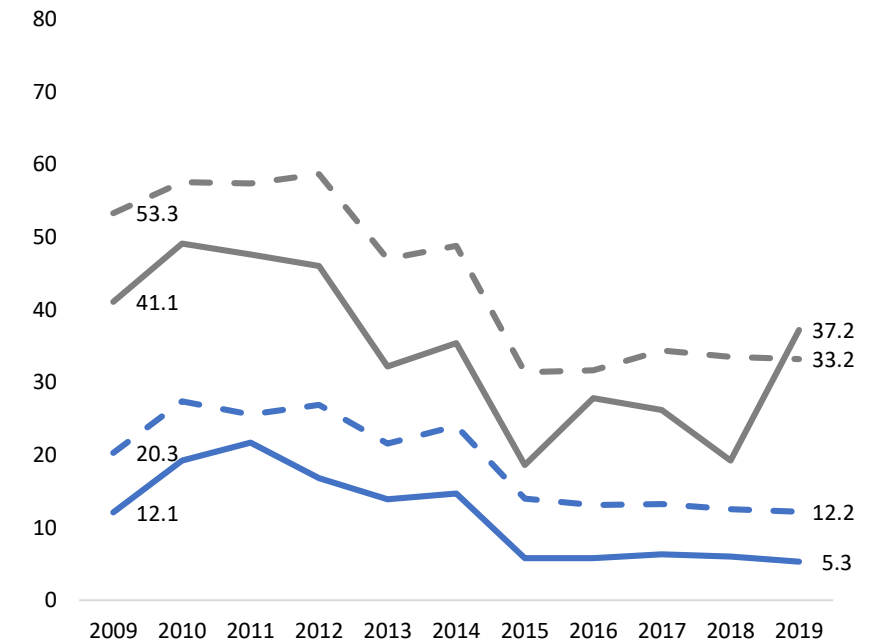
2009	Gap Type	2019
-24	State	-31
-17.1	St. Louis City	-38.3



- State - Black (not Hispanic)
- State - White (not Hispanic)
- ST. LOUIS CITY - Black (not Hispanic)
- ST. LOUIS CITY - White (not Hispanic)

Grade 8 Mathematics

2009	Gap Type	2019
-33	State	-21
-29	St. Louis City	-31.9

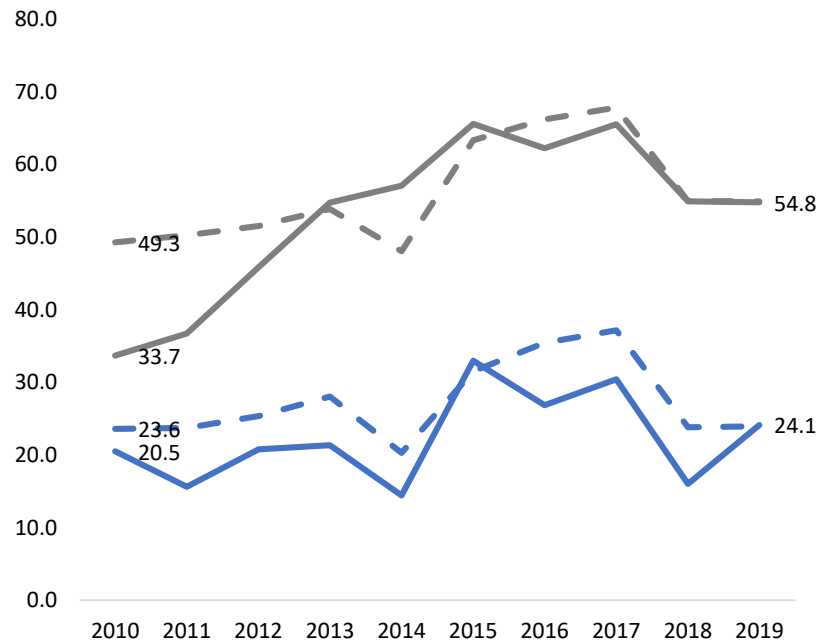


- State - Black (not Hispanic)
- State - White (not Hispanic)
- ST. LOUIS CITY - Black (not Hispanic)
- ST. LOUIS CITY - White (not Hispanic)

Supplemental Detail: Black-White Gaps Relative to State Average, Charters

Grade 3 Eng. Language Arts

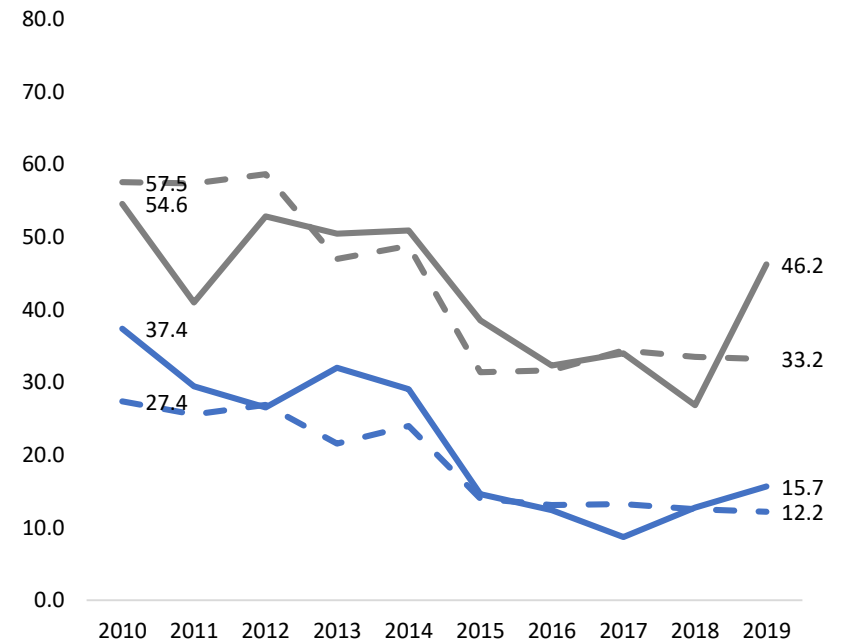
2010	2019	Gap Type
-25.7	-31	State
-13.2	-30.6	Charters



- State - Black (not Hispanic)
- State - White (not Hispanic)
- Charter - Black (not Hispanic)
- Charter - White (not Hispanic)

Grade 8 Mathematics

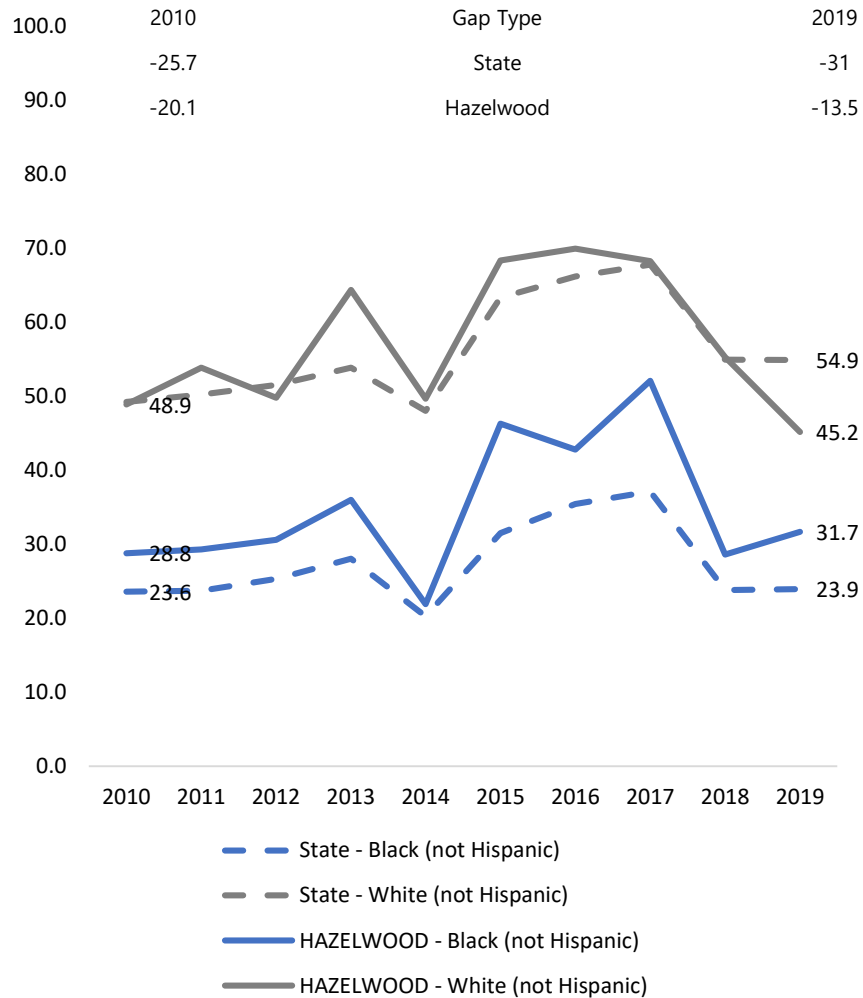
2010	2019	Gap Type
-30.2	-21	State
-17.2	-30.6	Charters



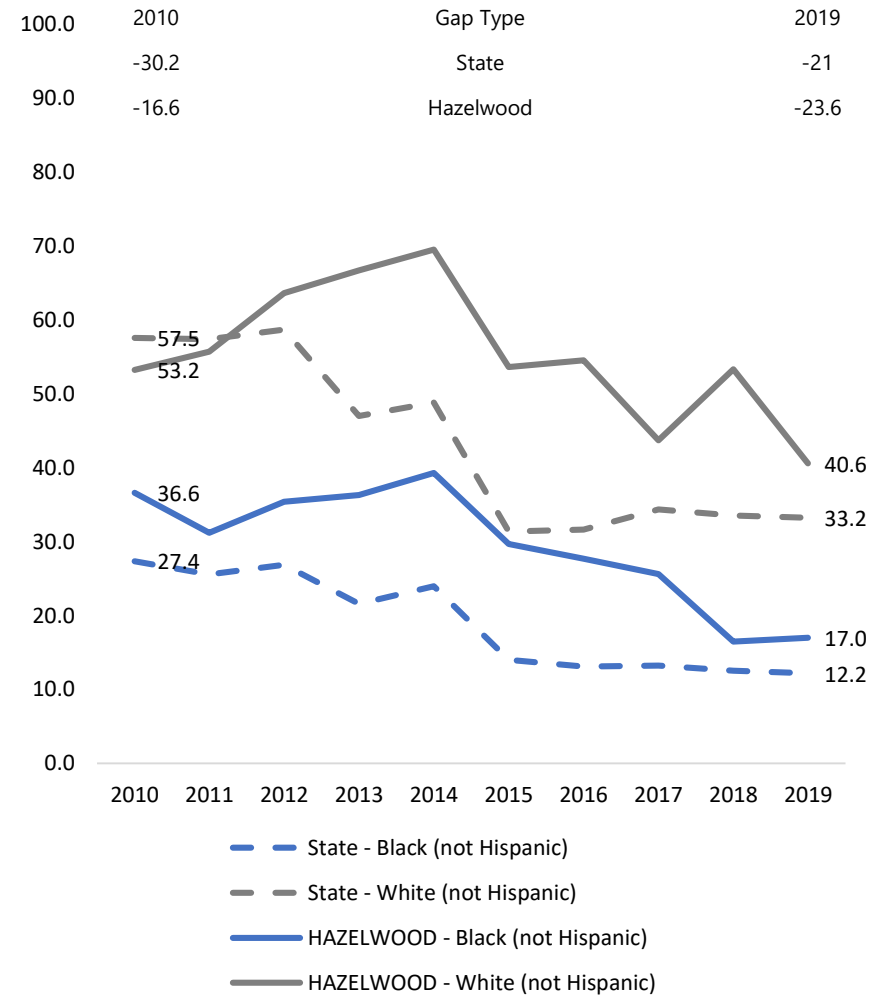
- State - Black (not Hispanic)
- State - White (not Hispanic)
- Charter - Black (not Hispanic)
- Charter - White (not Hispanic)

Supplemental Detail: Black-White Gaps Relative to State Average, Hazelwood

Grade 3 Eng. Language Arts

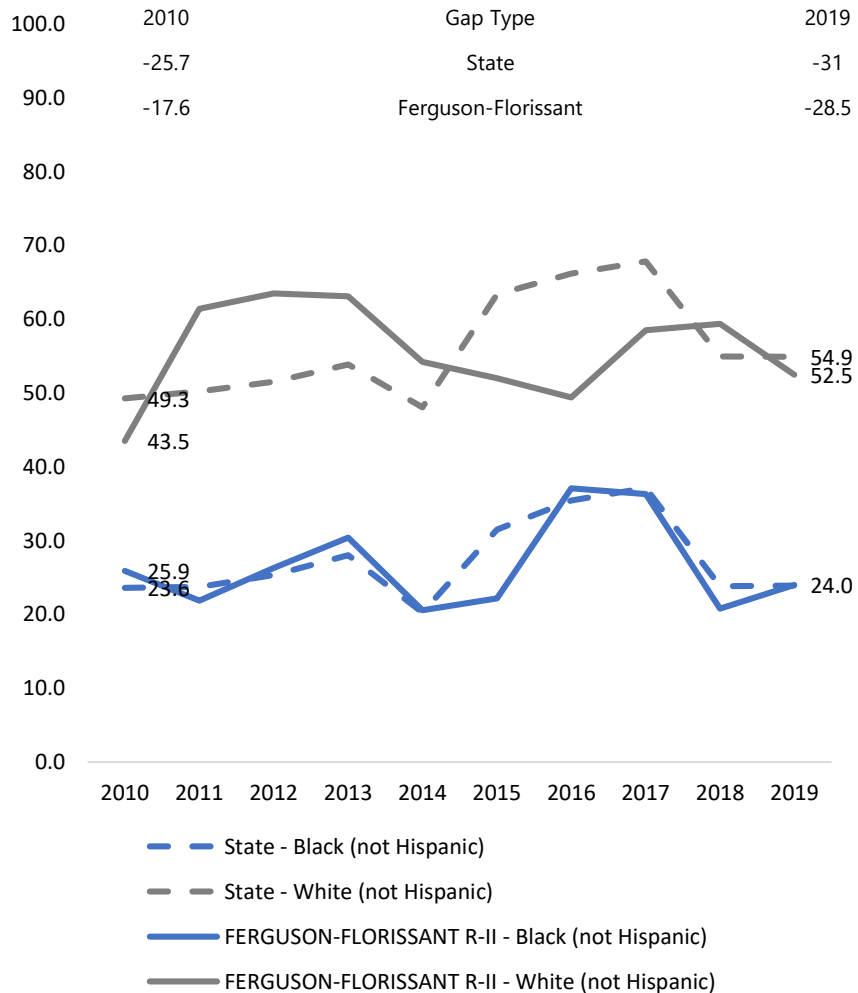


Grade 8 Mathematics

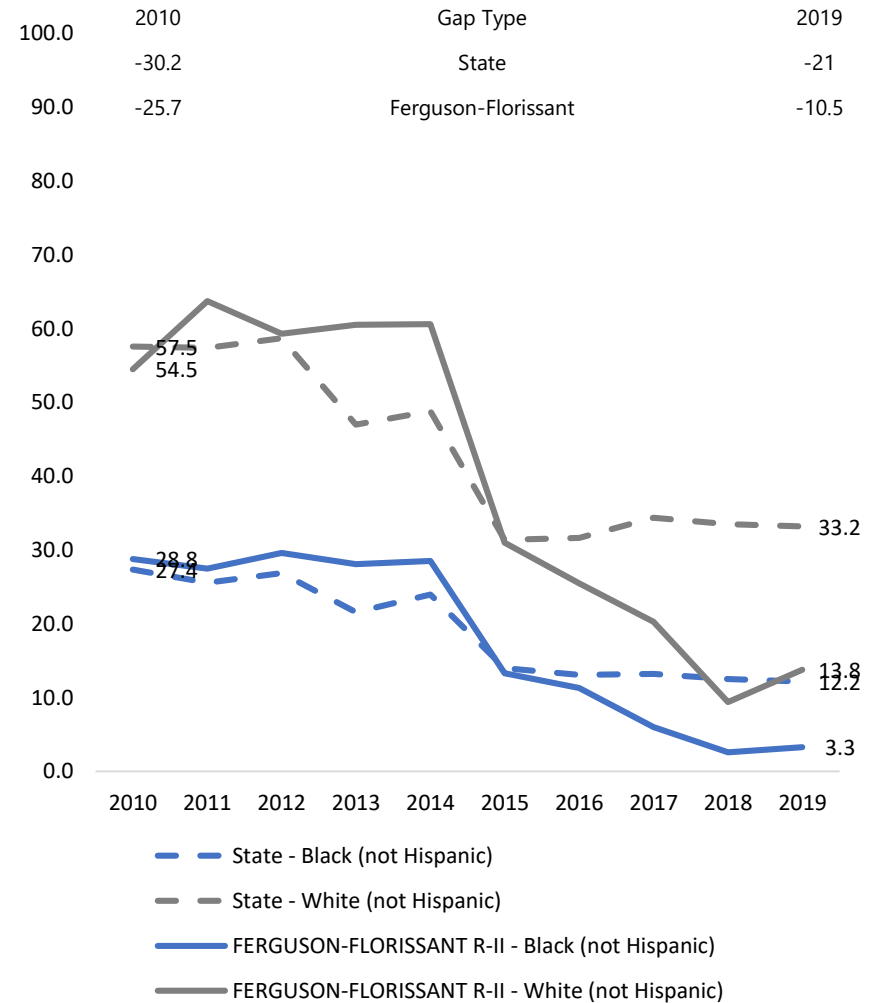


Supplemental Detail: Black-White Gaps Relative to State Average, Ferguson-Florissant

Grade 3 Eng. Language Arts



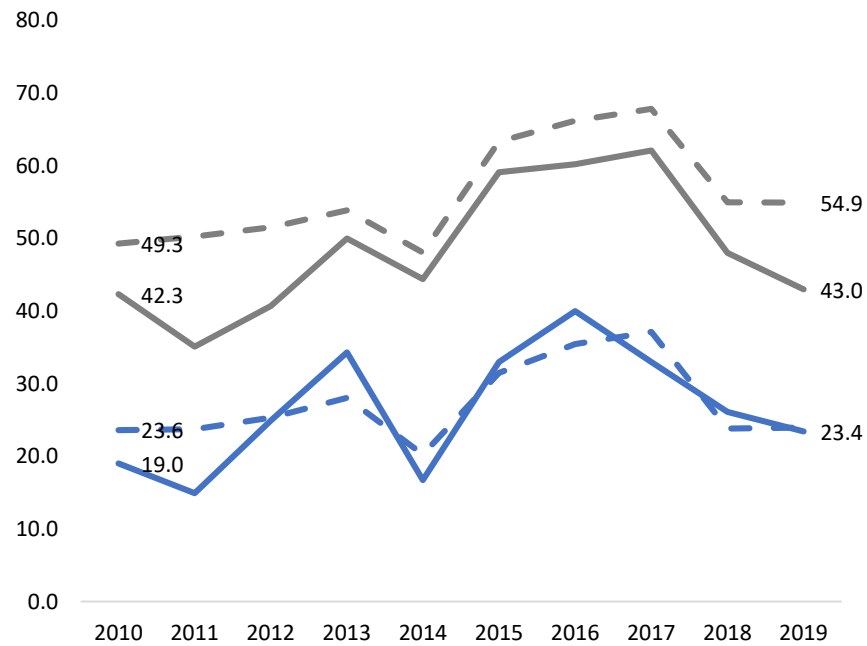
Grade 8 Mathematics



Supplemental Detail: Black-White Gaps Relative to State Average, Ritenour

Grade 3 Eng. Language Arts

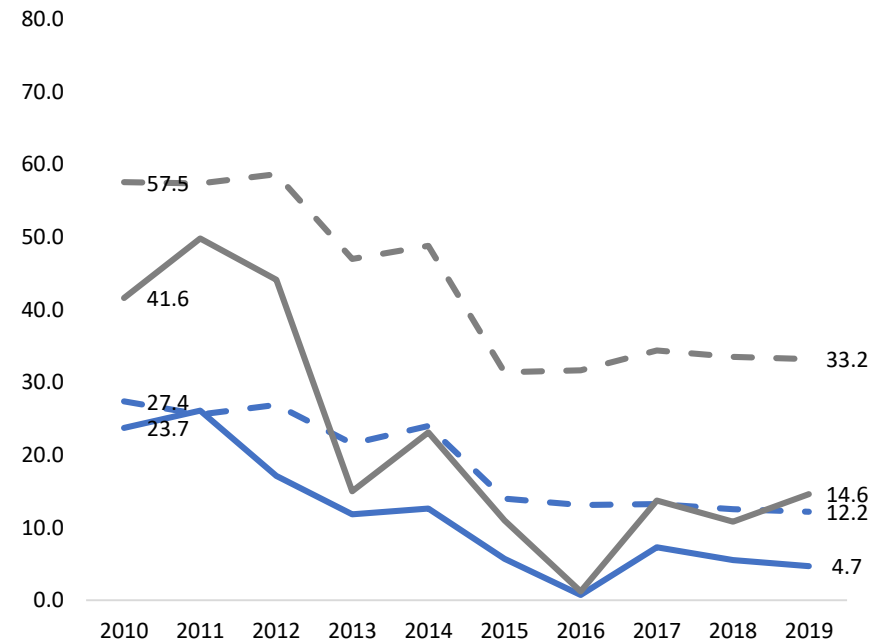
Year	2010	2019
State	-25.7	-31
Ritenour	-23.3	-19.6



- - State - Black (not Hispanic)
 - - State - White (not Hispanic)
 — RITENOUR - Black (not Hispanic)
 — RITENOUR - White (not Hispanic)

Grade 8 Mathematics

Year	2010	2019
State	-30.2	-21
Ritenour	-17.9	-9.9

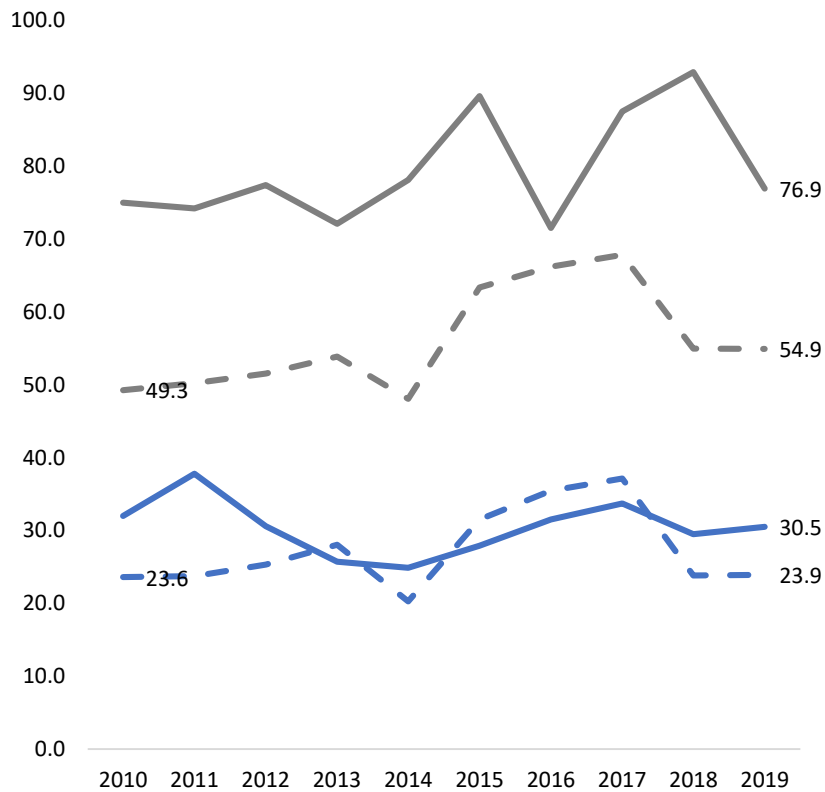


- - State - Black (not Hispanic)
 - - State - White (not Hispanic)
 — RITENOUR - Black (not Hispanic)
 — RITENOUR - White (not Hispanic)

Supplemental Detail: Black-White Gaps Relative to State Average, University City

Grade 3 Eng. Language Arts

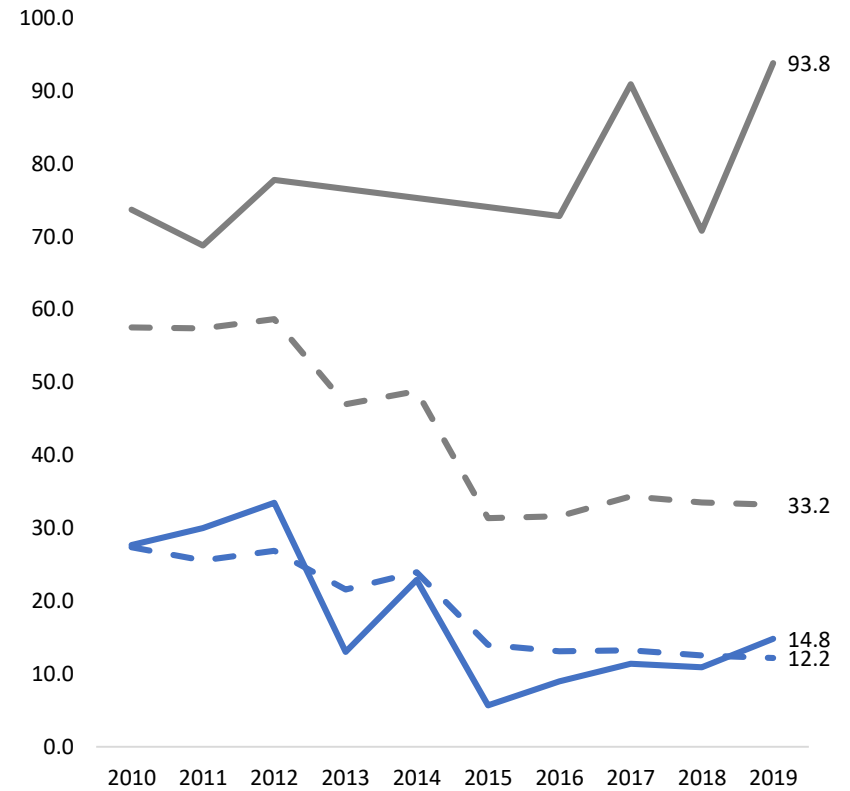
2010	Gap Type	2019
-25.7	State	-31
-43.0	University City	-46.4



- State - Black (not Hispanic)
- State - White (not Hispanic)
- UNIVERSITY CITY - Black (not Hispanic)
- UNIVERSITY CITY - White (not Hispanic)

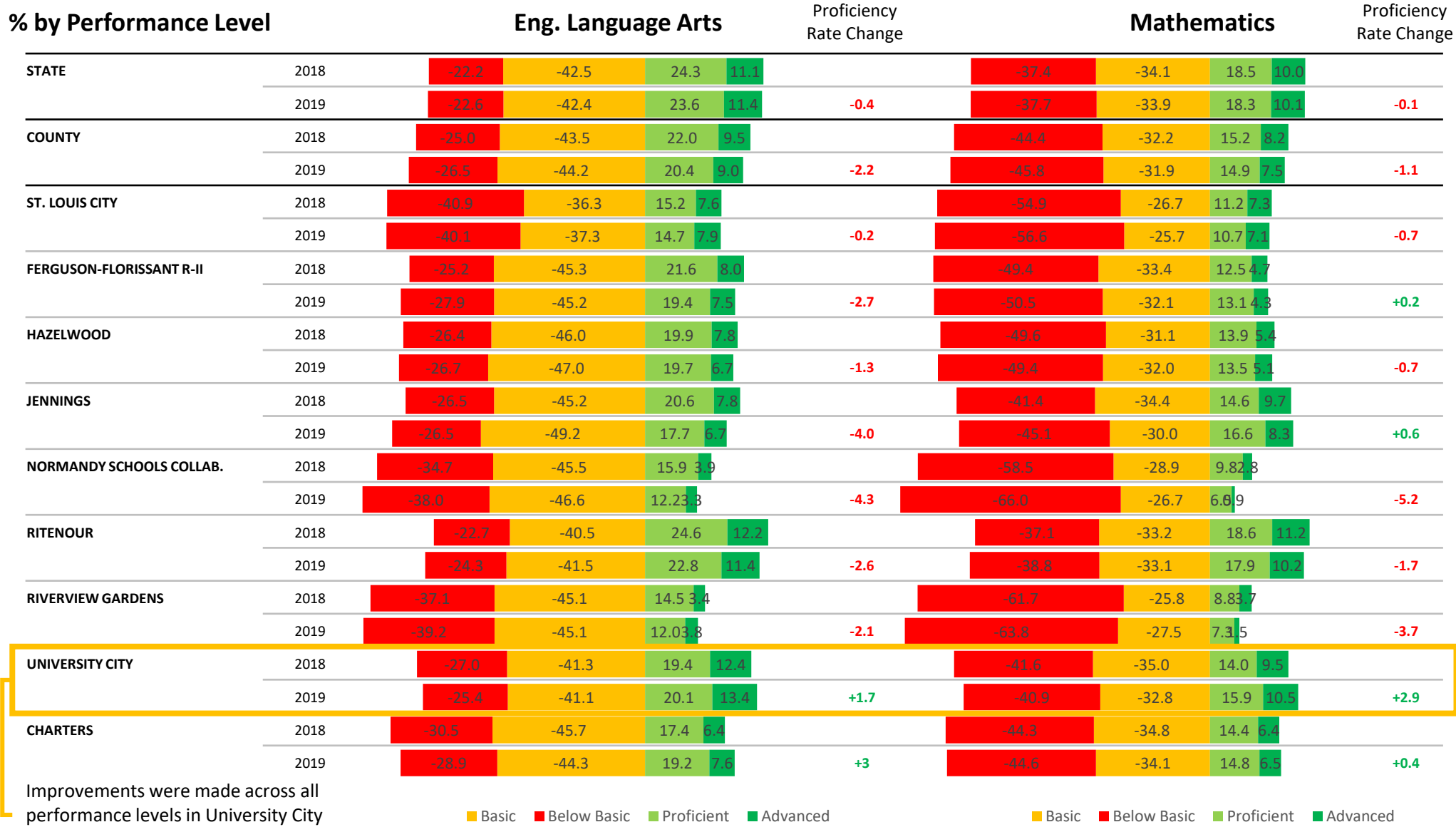
Grade 8 Mathematics

2010	Gap Type	2019
-30.2	State	-21
-29.9	University City	-31.9



- State - Black (not Hispanic)
- State - White (not Hispanic)
- UNIVERSITY CITY - Black (not Hispanic)
- UNIVERSITY CITY - White (not Hispanic)

Among low-income (FRPL) students, performance decreased statewide and in SLPS and county schools; among selected districts, only University City and St. Louis charter schools saw average increases in proficiency



Selected Districts



Note: Not all St. Louis County districts are included in "selected districts".

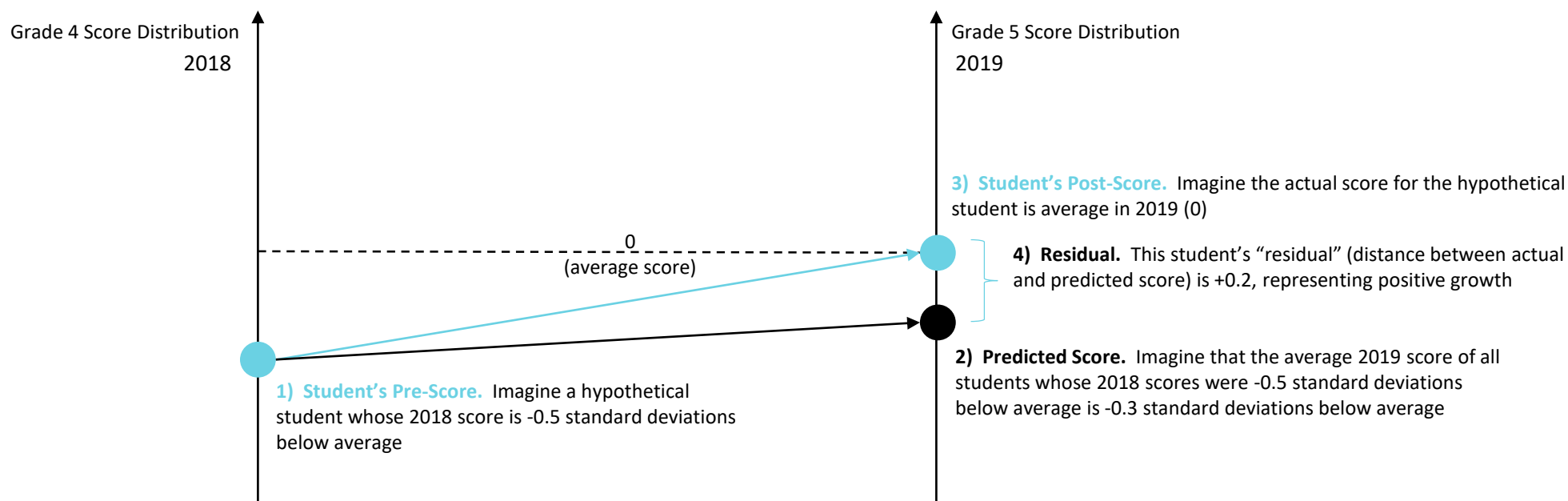
Growth and Improvement:

Which districts are beating the odds and performing at higher levels than their peers?

Growth measures are an indication of how much above or below students score relative to their academic peers statewide

This approach allows districts and schools to be fairly compared on the basis of how much they are increasing student learning from year-to-year (i.e., schools that serve mostly lower performing students can still post significant growth if those students increase above what is expected based on other low performing students statewide).

To compute growth, each student has an expected score estimated using up to 3 years of paired test scores per student; these are then “pooled” to create average growth measures by school or LEA.



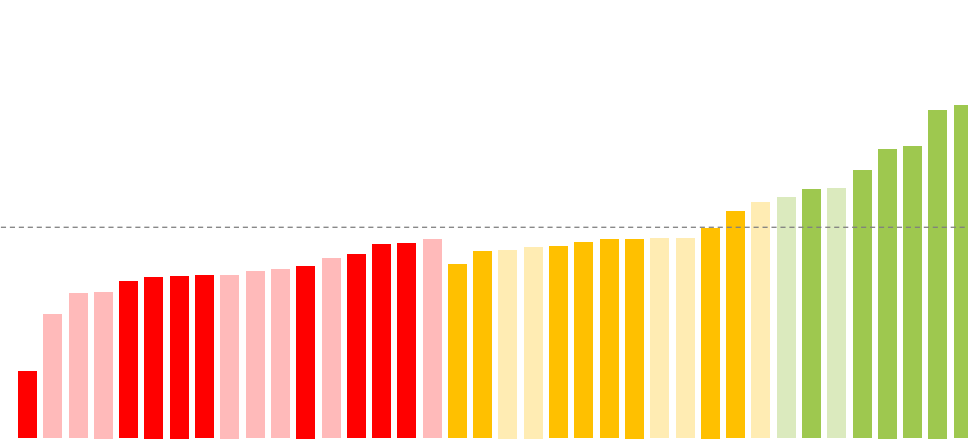
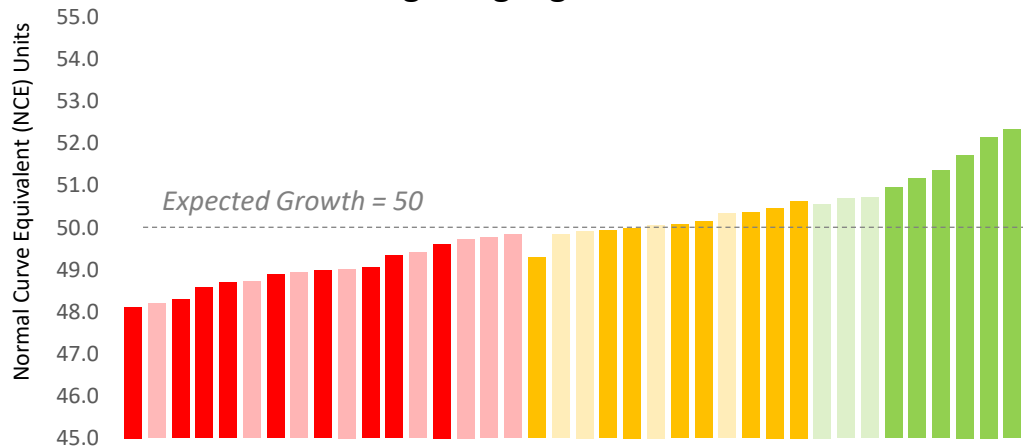
Students in 17 of the 38 districts and charter LEAs in St. Louis County and City are losing ground relative to their academic peers statewide and they include a mix of low-growth charters, county districts and SLPS

Growth Rates

Lighter hued districts are not in St. Louis City or TOT's targeted County districts

Eng. Language Arts

Mathematics



Falling Behind

Average Growth*

Positive Growth

Falling Behind

Average Growth*

Positive Growth

CARONDELET LEADERSHIP ACADEMY	48.1	ST. LOUIS COLLEGE PREP	49.3	MEHLVILLE R-IX	50.6
HANCOCK PLACE	48.2	PATTONVILLE R-III	49.8	BAYLESS	50.7
GATEWAY SCIENCE ACAD/ST LOUIS	48.3	LADUE	49.9	MAPLEWOOD-RICHMOND HEIGHTS	50.7
NORMANDY SCHOOLS COLLABORATIVE	48.6	RIVERVIEW GARDENS	49.9	HAWTHORN LEADERSHIP SCHL GIRLS	51.0
EAGLE COLLEGE PREP ENDEAVOR	48.7	RITENOUR	50.0	KIPP ST LOUIS PUBLIC SCHOOLS	51.2
AFFTON 101	48.7	VALLEY PARK	50.1	NORTH SIDE COMMUNITY SCHOOL	51.4
ST. LOUIS CITY	48.9	FERGUSON-FLOISSANT R-II	50.1	LAFAYETTE PREPARATORY ACADEMY	51.7
BRENTWOOD	48.9	JENNINGS	50.1	ST LOUIS LANG IMMERSION SCHOOL	52.2
UNIVERSITY CITY	49.0	CLAYTON	50.3	PREMIER CHARTER SCHOOL	52.3
WEBSTER GROVES	49.0	SPECL. SCH. DST. ST. LOUIS CO.	50.4		
LIFT FOR LIFE ACADEMY	49.1	LA SALLE CHARTER SCHOOL	50.5		
CONFLUENCE ACADEMIES	49.3	CITY GARDEN MONTESSORI	50.6		
LINDBERGH SCHOOLS	49.4				
HAZELWOOD	49.6				
KIRKWOOD R-VII	49.7				
PARKWAY C-2	49.8				
ROCKWOOD R-VI	49.8				

NORMANDY SCHOOLS COLLABORATIVE	46.6	LIFT FOR LIFE ACADEMY	49.1	BRENTWOOD	50.7
AFFTON 101	47.9	NORTH SIDE COMMUNITY SCHOOL	49.4	PREMIER CHARTER SCHOOL	50.9
ROCKWOOD R-VI	48.4	BAYLESS	49.5	MEHLVILLE R-IX	50.9
KIRKWOOD R-VII	48.5	MAPLEWOOD-RICHMOND HEIGHTS	49.5	ST. LOUIS COLLEGE PREP	51.4
GATEWAY SCIENCE ACAD/ST LOUIS	48.7	LA SALLE CHARTER SCHOOL	49.6	ST LOUIS LANG IMMERSION SCHOOL	51.9
EAGLE COLLEGE PREP ENDEAVOR	48.8	CITY GARDEN MONTESSORI	49.7	KIPP ST LOUIS PUBLIC SCHOOLS	51.9
UNIVERSITY CITY	48.9	HAWTHORN LEADERSHIP SCHL GIRLS	49.7	SCHOOLS	51.9
CONFLUENCE ACADEMIES	48.9	JENNINGS	49.7	KIPP ST LOUIS PUBLIC SCHOOLS	51.9
PATTONVILLE R-III	48.9	LADUE	49.7	SCHOOLS	51.9
WEBSTER GROVES	49.0	CLAYTON	49.7	SPECL. SCH. DST. ST. LOUIS CO.	52.8
HANCOCK PLACE	49.0	RITENOUR	50.0	LAFAYETTE PREPARATORY ACADEMY	52.9
ST. LOUIS CITY	49.1	CARONDELET LEADERSHIP ACADEMY	50.4	ACADEMY	52.9
LINDBERGH SCHOOLS	49.3	VALLEY PARK	50.6		
FERGUSON-FLOISSANT R-II	49.4				
RIVERVIEW GARDENS	49.6				
HAZELWOOD	49.6				
PARKWAY C-2	49.7				



*Districts are determined to have 'Average Growth' if their result is statistically indistinguishable from 50.

Between the city and county, 65% of students are enrolled in districts where students are falling farther behind their academic peers in ELA on average

St. Louis City (30,960 students)

18%
of all
students
enrolled



LEA

ST. LOUIS CITY
CONFLUENCE ACADEMIES
GATEWAY SCIENCE ACAD/ST LOUIS
EAGLE COLLEGE PREP ENDEAVOR
LIFT FOR LIFE ACADEMY
CARONDELET LEADERSHIP ACADEMY
ST. LOUIS COLLEGE PREP
CITY GARDEN MONTESSORI
LA SALLE CHARTER SCHOOL
KIPP ST LOUIS PUBLIC SCHOOLS
PREMIER CHARTER SCHOOL
ST LOUIS LANG IMMERSION SCHOOL
NORTH SIDE COMMUNITY SCHOOL
LAFAYETTE PREPARATORY ACADEMY
HAWTHORN LEADERSHIP SCHL GIRLS

Type

Low Growth
Low Growth
Low Growth
Low Growth
Low Growth
Low Growth
Average Growth
Average Growth
Average Growth
High Growth
High Growth
High Growth
High Growth
High Growth
High Growth

Enrollment

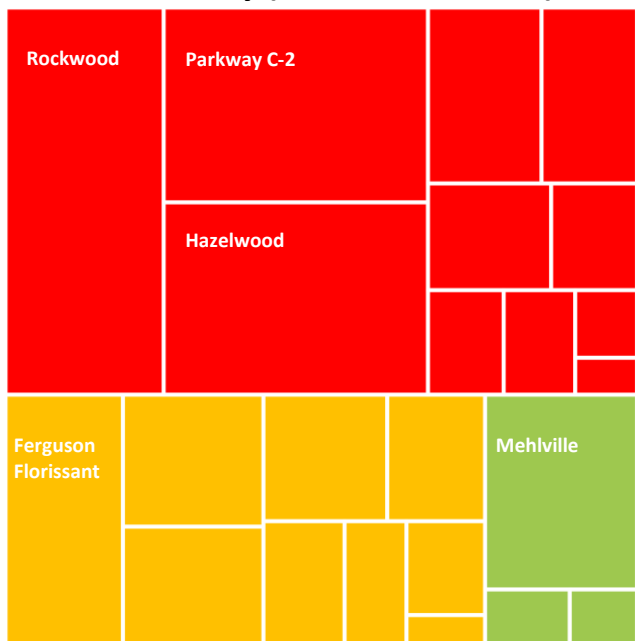
20879
2318
1378
648
577
418
316
227
117
1649
903
709
351
270
200

% of Total Enrollment

67%
7%
4%
2%
2%
1%
1%
1%
0%
5%
3%
2%
1%
1%
1%

St. Louis County (138,275 students)

82%
of all
students
enrolled



LEA

ROCKWOOD R-VI
PARKWAY C-2
HAZELWOOD
LINDBERGH SCHOOLS
KIRKWOOD R-VII
WEBSTER GROVES
NORMANDY SCHOOLS COLLABORATIVE
UNIVERSITY CITY
AFFTON 101
HANCOCK PLACE
BRENTWOOD
FERGUSON-FLOISSANT R-II
RITENOUR
PATTONVILLE R-III
RIVERVIEW GARDENS
LADUE
SPECL. SCH. DST. ST. LOUIS CO.
CLAYTON
JENNINGS
VALLEY PARK
MEHLVILLE R-IX
BAYLESS
MAPLEWOOD-RICHMOND HEIGHTS

Type

Low Growth
Low Growth
Low Growth
Low Growth
Low Growth
Low Growth
Low Growth
Low Growth
Low Growth
Low Growth
Low Growth
Average Growth
Average Growth
Average Growth
Average Growth
Average Growth
Average Growth
Average Growth
Average Growth
Average Growth
High Growth
High Growth
High Growth

Enrollment

20967
17609
17384
6833
5760
4493
3151
2697
2560
1439
784
10157
6326
5797
5354
4223
3513
2681
2520
874
10138
1675
1340

% of Total Enrollment

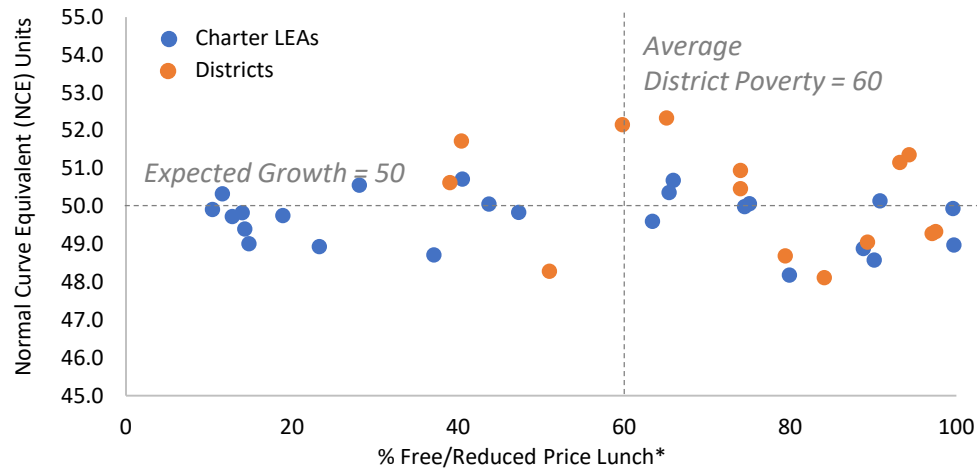
38%
32%
32%
13%
11%
8%
6%
5%
5%
3%
1%
19%
12%
11%
10%
8%
6%
5%
5%
2%
19%
3%
2%



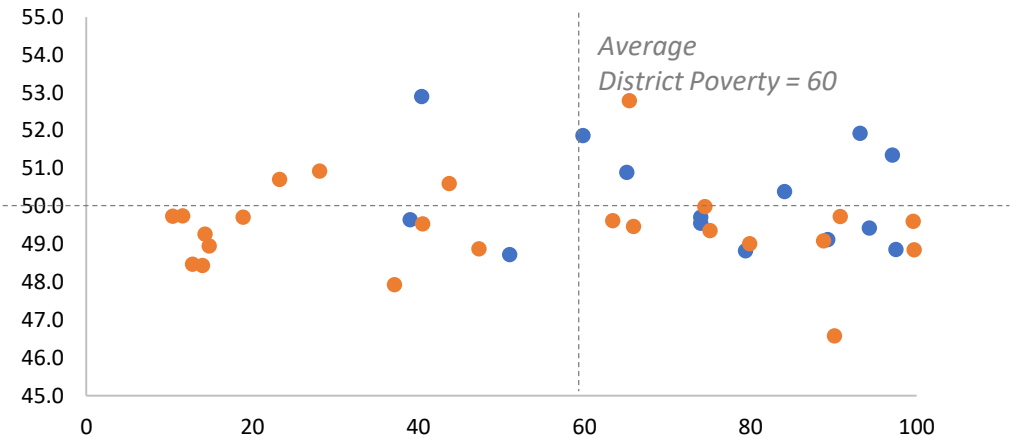
*Districts are determined to have 'Average Growth' if their result is statistically indistinguishable from 50.
Note: Each cell in the treemap represents a single district, sized by its enrollment.

Across all districts and charters in the city and county, just 6 serve above-average rates of students in poverty and are high-growth in either ELA or math

Eng. Language Arts



Mathematics



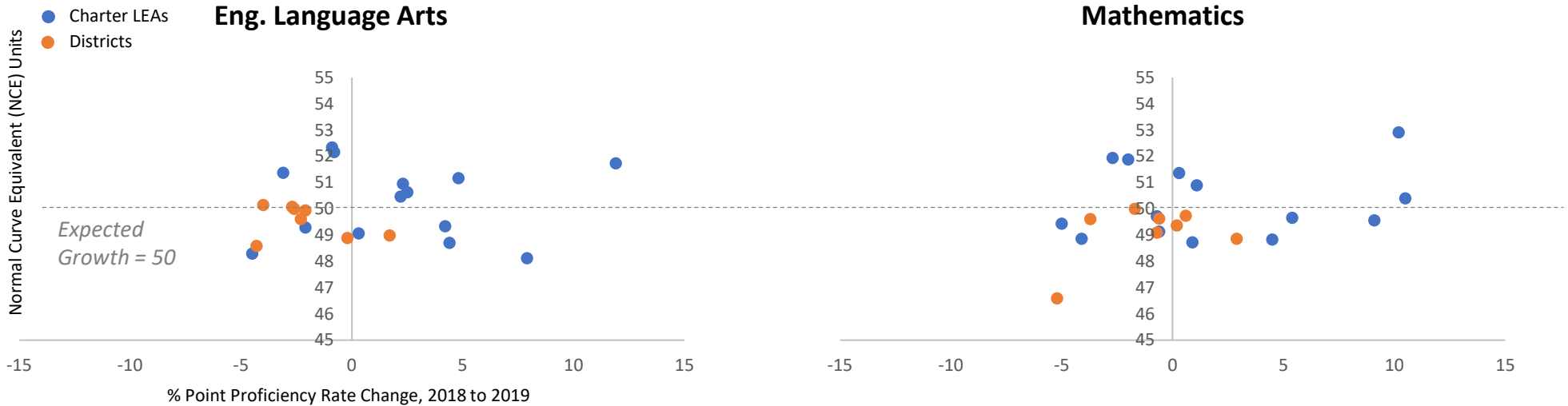
District	% FRPL	Growth NCE	Sig?	% Prof. 2019	Proficiency Change
UNIVERSITY CITY	99.7	49.0	1	33.5	1.7
RIVERVIEW GARDENS	99.6	49.9	0	15.8	-2.1
CONFLUENCE ACADEMIES	97.5	49.3	1	23.6	4.2
ST. LOUIS COLLEGE PREP	97.1	49.3	0	22	-2.1
NORTH SIDE COMMUNITY SCHOOL	94.3	51.4	1	46.1	-3.1
KIPP ST LOUIS PUBLIC SCHOOLS	93.2	51.2	1	27.1	4.8
JENNINGS	90.8	50.1	0	24.4	-4.0
NORMANDY SCHOOLS COLLABORATIVE	90.1	48.6	1	15.5	-4.3
LIFT FOR LIFE ACADEMY	89.3	49.1	1	22.6	0.3
ST. LOUIS CITY	88.8	48.9	1	22.6	-0.2
CARONDELET LEADERSHIP ACADEMY	84.1	48.1	1	20.7	7.9
HANCOCK PLACE	79.9	48.2	1	47.2	-9.8
EAGLE COLLEGE PREP ENDEAVOR	79.4	48.7	1	24.2	4.4
FERGUSON-FLOISSANT R-II	75.1	50.1	0	26.9	-2.7
RITENOUR	74.5	50.0	0	34.2	-2.6
LA SALLE CHARTER SCHOOL	74	50.5	0	17.5	2.2
HAWTHORN LEADERSHIP SCHL GIRLS	74	51.0	1	30.8	2.3
BAYLESS	65.9	50.7	1	52.7	2.1
SPECL. SCH. DST. ST. LOUIS CO.	65.4	50.4	0	13.5	-5.3
PREMIER CHARTER SCHOOL	65.1	52.3	1	39.3	-0.9
HAZELWOOD	63.4	49.6	1	32.9	-2.3

District	% FRPL	Growth NCE	Sig?	% Prof. 2019	Proficiency Change
UNIVERSITY CITY	99.7	48.9	1	26.4	2.9
RIVERVIEW GARDENS	99.6	49.6	1	8.8	-3.7
CONFLUENCE ACADEMIES	97.5	48.9	1	14.8	-4.1
ST. LOUIS COLLEGE PREP	97.1	51.4	1	15.5	0.3
NORTH SIDE COMMUNITY SCHOOL	94.3	49.4	0	43.5	-5.0
KIPP ST LOUIS PUBLIC SCHOOLS	93.2	51.9	1	24.1	-2.7
JENNINGS	90.8	49.7	0	24.9	0.6
NORMANDY SCHOOLS COLLABORATIVE	90.1	46.6	1	7.4	-5.2
LIFT FOR LIFE ACADEMY	89.3	49.1	0	20.9	-0.6
ST. LOUIS CITY	88.8	49.1	1	17.8	-0.7
CARONDELET LEADERSHIP ACADEMY	84.1	50.4	0	21.6	10.5
HANCOCK PLACE	79.9	49.0	1	48.2	-2.4
EAGLE COLLEGE PREP ENDEAVOR	79.4	48.8	1	25.5	4.5
FERGUSON-FLOISSANT R-II	75.1	49.4	1	17.4	0.2
RITENOUR	74.5	50.0	0	28.1	-1.7
LA SALLE CHARTER SCHOOL	74	49.6	0	13.6	9.1
HAWTHORN LEADERSHIP SCHL GIRLS	74	49.7	0	14.8	-0.7
BAYLESS	65.9	49.5	0	44.5	0.9
SPECL. SCH. DST. ST. LOUIS CO.	65.4	52.8	1	3.8	-4.2
PREMIER CHARTER SCHOOL	65.1	50.9	1	31.8	1.1
HAZELWOOD	63.4	49.6	1	24.6	-0.6



*District free/reduced price lunch rates are taken from final recorded value prior to CEP designation in statewide demographics data.
 **These two charters' FRPL rates were not available from DESE, so they were set at the charter average.

Growth and proficiency rate improvement don't always track together, as growth incorporates movement among students at any level of performance and proficiency rates just detect those that move from below to above



A subset of LEAs have seen positive growth and declines in proficiency and vice versa.

District	Growth	Sig?	% Pt Prof Chg
LAFAYETTE PREPARATORY ACADEMY	51.7	1	11.9
CARONDELET LEADERSHIP ACADEMY	48.1	1	7.9
KIPP ST LOUIS PUBLIC SCHOOLS	51.2	1	4.8
EAGLE COLLEGE PREP ENDEAVOR	48.7	1	4.4
CONFLUENCE ACADEMIES	49.3	1	4.2
CITY GARDEN MONTESSORI	50.6	0	2.5
HAWTHORN LEADERSHIP SCHL GIRLS	51.0	1	2.3
LA SALLE CHARTER SCHOOL	50.5	0	2.2
UNIVERSITY CITY	49.0	1	1.7
LIFT FOR LIFE ACADEMY	49.1	1	0.3
ST. LOUIS CITY	48.9	1	-0.2
ST LOUIS LANG IMMERSION SCHOOL	52.2	1	-0.8
PREMIER CHARTER SCHOOL	52.3	1	-0.9
RIVERVIEW GARDENS	49.9	0	-2.1
ST. LOUIS COLLEGE PREP	49.3	0	-2.1
HAZELWOOD	49.6	1	-2.3
RITENOUR	50.0	0	-2.6
FERGUSON-FLOISSANT R-II	50.1	0	-2.7
NORTH SIDE COMMUNITY SCHOOL	51.4	1	-3.1
JENNINGS	50.1	0	-4.0
NORMANDY SCHOOLS COLLABORATIVE	48.6	1	-4.3
GATEWAY SCIENCE ACAD/ST LOUIS	48.3	1	-4.5

District	Growth	Sig?	% Pt Prof Chg
CARONDELET LEADERSHIP ACADEMY	50.4	0	10.5
LAFAYETTE PREPARATORY ACADEMY	52.9	1	10.2
LA SALLE CHARTER SCHOOL	49.6	0	9.1
CITY GARDEN MONTESSORI	49.7	0	5.4
EAGLE COLLEGE PREP ENDEAVOR	48.8	1	4.5
UNIVERSITY CITY	48.9	1	2.9
PREMIER CHARTER SCHOOL	50.9	1	1.1
GATEWAY SCIENCE ACAD/ST LOUIS	48.7	1	0.9
JENNINGS	49.7	0	0.6
ST. LOUIS COLLEGE PREP	51.4	1	0.3
FERGUSON-FLOISSANT R-II	49.4	1	0.2
LIFT FOR LIFE ACADEMY	49.1	0	-0.6
HAZELWOOD	49.6	1	-0.6
HAWTHORN LEADERSHIP SCHL GIRLS	49.7	0	-0.7
ST. LOUIS CITY	49.1	1	-0.7
RITENOUR	50.0	0	-1.7
ST LOUIS LANG IMMERSION SCHOOL	51.9	1	-2.0
KIPP ST LOUIS PUBLIC SCHOOLS	51.9	1	-2.7
RIVERVIEW GARDENS	49.6	1	-3.7
CONFLUENCE ACADEMIES	48.9	1	-4.1
NORTH SIDE COMMUNITY SCHOOL	49.4	0	-5.0
NORMANDY SCHOOLS COLLABORATIVE	46.6	1	-5.2



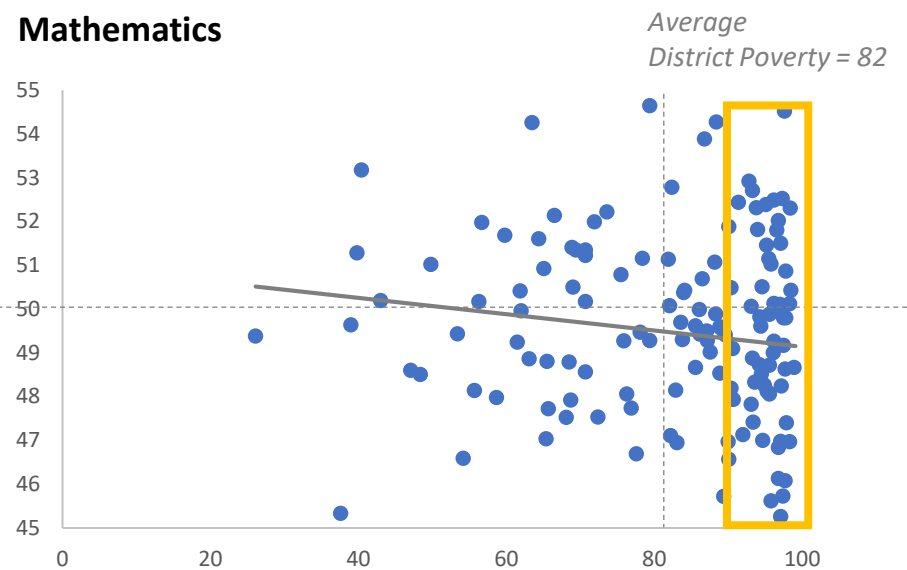
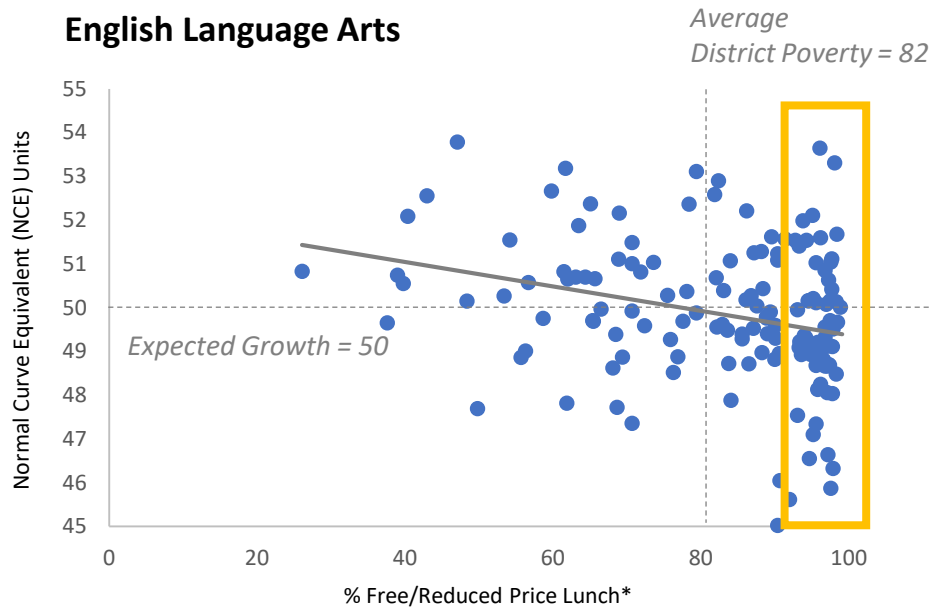
Note: Only TOT districts included.

Highlights:

Which schools among TOT's focus districts are doing the best and worst with black students?

Among the highest poverty schools in selected county districts and the city, there are schools achieving significant growth with the poorest students

The fit lines below suggest that higher poverty schools in the region tend to have lower average growth scores. However, there are schools even at the highest level of poverty (>=90%) that are significantly outperforming others.



District	Name	NCE	% FRPL
CONFLUENCE ACADEMIES	SOUTH CITY	51.7	98.4
ST. LOUIS CITY	FROEBEL ELEM.	53.3	98.1
ST. LOUIS CITY	ACAD OF ENTRE STDY@LOUVERTURE	50.8	96.8
RIVERVIEW GARDENS	MOLINE ELEM.	51.6	96.2
KIPP ST LOUIS PUBLIC SCHOOLS	KIPP VICTORY ACADEMY	53.6	96.1
RIVERVIEW GARDENS	MEADOWS ELEM.	52.1	95.1
NORTH SIDE COMMUNITY SCHOOL	NORTH SIDE COMMUNITY SCHOOL	51.5	94.3
FERGUSON-FLORISSANT R-II	AIRPORT ELEM.	52.0	93.8
JENNINGS	NORTHVIEW ELEM.	51.4	93.3
KIPP ST LOUIS PUBLIC SCHOOLS	KIPP INSPIRE ACADEMY	51.6	91.4
FERGUSON-FLORISSANT R-II	JOHNSON WABASH ELEM.	51.1	90.4
JENNINGS	JENNINGS JR. HIGH	51.2	90.4

District	Name	NCE	% FRPL
CONFLUENCE ACADEMIES	SOUTH CITY	52.3	98.4
ST. LOUIS CITY	FROEBEL ELEM.	59.2	98.1
ST. LOUIS CITY	OAK HILL ELEM.	54.5	97.6
ST. LOUIS CITY	SIGEL ELEM. COMM. ED. CTR.	52.5	97.3
ST. LOUIS COLLEGE PREP	St. Louis College Prep Middle	51.5	97.1
ST. LOUIS CITY	HENRY ELEM.	52.0	96.8
RIVERVIEW GARDENS	MOLINE ELEM.	52.5	96.2
RIVERVIEW GARDENS	WESTVIEW MIDDLE	51.2	95.5
ST. LOUIS CITY	COLE ELEM.	51.5	95.2
RIVERVIEW GARDENS	MEADOWS ELEM.	52.4	95.1
ST. LOUIS CITY	AMES VISUAL/PERF. ARTS	51.8	94
FERGUSON-FLORISSANT R-II	AIRPORT ELEM.	52.3	93.8
JENNINGS	NORTHVIEW ELEM.	52.7	93.3
ST. LOUIS CITY	FARRAGUT ELEM.	52.9	92.8
KIPP ST LOUIS PUBLIC SCHOOLS	KIPP INSPIRE ACADEMY	52.4	91.4
	LONG MIDDLE COMMUNITY ED. CTR.		
ST. LOUIS CITY	CTR.	51.9	90.1



*District free/reduced price lunch rates are taken from final recorded value prior to CEP designation in statewide demographics data.

School Performance Changes in Selected Districts Black Students, 2018 to 2019 Top-Improving Schools (>=5% points averaged)

District	School	English Language Arts			Mathematics			Average Chg.
		2018	2019	Change	2018	2019	Change	
JENNINGS	JENNINGS HIGH	33.2			26.1	52	25.9	25.9
ST. LOUIS CITY	MILLER CAREER ACADEMY	18.5			8.2	32.4	24.2	24.2
EAGLE COLLEGE PREP ENDEAVOR	EAGLE TOWER GROVE EAST	6.4	18.2	11.8	6.4	27.3	20.9	16.35
ST. LOUIS CITY	COLLEGIATE SCHOOL OF MED/BIO		86.7		44.4	58	13.6	13.6
UNIVERSITY CITY	UNIVERSITY CITY SR. HIGH	24.9	36.5	11.6	5.8	18.5	12.7	12.15
CARONDELET LEADERSHIP ACADEMY	CARONDELET LEADERSHIP ACADEMY	5.9	16.7	10.8	4.2	17.4	13.2	12
LIFT FOR LIFE ACADEMY	LIFT FOR LIFE ACADEMY HIGH SCH		35.7		51.1	62.5	11.4	11.4
HAZELWOOD	HAZELWOOD CENTRAL HIGH	41.8	44.6	2.8	29.3	46.4	17.1	9.95
ST. LOUIS CITY	SOLDAN INTERNATIONAL STUDIES	23.9	32.7	8.8	3.4	11.9	8.5	8.65
CITY GARDEN MONTESSORI	CITY GARDEN MONTESSORI SCHOOL	33.3	38.9	5.6	18.3	29.6	11.3	8.45
KIPP ST LOUIS PUBLIC SCHOOLS	KIPP VICTORY ACADEMY	18.5	30.4	11.9	25.6	30.4	4.8	8.35
FERGUSON-FLORISSANT R-II	PARKER ROAD ELEM.	25.9	34.5	8.6	15.3	22.4	7.1	7.85
UNIVERSITY CITY	BARBARA JORDAN ELEM.	31.1	36.6	5.5	21	30.7	9.7	7.6
FERGUSON-FLORISSANT R-II	BERKELEY MIDDLE	15.9	19.2	3.3	5.8	16.2	10.4	6.85
EAGLE COLLEGE PREP ENDEAVOR	EAGLE GRAVOIS PARK	3.5	4.6	1.1	0	11.7	11.7	6.4
HAZELWOOD	LUSHER ELEM.	23.9	33.3	9.4	17.7	20.9	3.2	6.3
ST. LOUIS CITY	MANN ELEM.	11.1	18.4	7.3	4.7	10	5.3	6.3
LAFAYETTE PREPARATORY ACADEMY	LAFAYETTE PREPARATORY ACADEMY	24.6	34.2	9.6	17.4	20.3	2.9	6.25
HAZELWOOD	MCCURDY ELEM.	26.2	35.1	8.9	17.8	20.6	2.8	5.85
CONFLUENCE ACADEMIES	GRAND CENTER ARTS ACADEMY HIGH	28.9	43.7	14.8	6.7	3.5	-3.2	5.8
LA SALLE CHARTER SCHOOL	LA SALLE CHARTER SCHOOL	15.6	16.9	1.3	4.6	13.8	9.2	5.25
ST. LOUIS CITY	CENTRAL VISUAL/PERF. ARTS HIGH	43	47.2	4.2	5.5	11.7	6.2	5.2
ST. LOUIS CITY	ROOSEVELT HIGH	17.8	18.5	0.7	1.7	11.1	9.4	5.05

School Performance Changes in Selected Districts

FRPL Students, 2018 to 2019

Top-Improving Schools (>=5% points averaged)

District	School	English Language Arts			Mathematics			Average Chg.
		2018	2019	Change	2018	2019	Change	
JENNINGS	JENNINGS HIGH	33.1			25.8	52	26.2	26.2
ST. LOUIS CITY	MILLER CAREER ACADEMY	19.4			8.1	31.6	23.5	23.5
CITY GARDEN MONTESSORI	CITY GARDEN MONTESSORI SCHOOL	36.7	57.8	21.1	18.3	34.7	16.4	18.75
UNIVERSITY CITY	UNIVERSITY CITY SR. HIGH	33.1	45.7	12.6	11	29.2	18.2	15.4
EAGLE COLLEGE PREP ENDEAVOR	EAGLE TOWER GROVE EAST	17.4	29.5	12.1	19.6	38.2	18.6	15.35
CONFLUENCE ACADEMIES	GRAND CENTER ARTS ACADEMY HIGH	30.2	54.7	24.5	7.6	7	-0.6	11.95
UNIVERSITY CITY	BARBARA JORDAN ELEM.	31.2	37.9	6.7	21.3	34.5	13.2	9.95
ST LOUIS LANG IMMERSION SCHOOL	ST LOUIS LANG IMMERSION MARINE	21	29.5	8.5	19.7	30.3	10.6	9.55
CARONDELET LEADERSHIP ACADEMY	CARONDELET LEADERSHIP ACADEMY	12.8	20.7	7.9	11.1	21.6	10.5	9.2
ST. LOUIS CITY	ROOSEVELT HIGH	18.9	23.1	4.2	4.1	18	13.9	9.05
LAFAYETTE PREPARATORY ACADEMY	LAFAYETTE PREPARATORY ACADEMY	24.1	36.3	12.2	17.2	22.8	5.6	8.9
KIPP ST LOUIS PUBLIC SCHOOLS	KIPP VICTORY ACADEMY	18.2	29.9	11.7	25.3	29.9	4.6	8.15
ST. LOUIS CITY	SOLDAN INTERNATIONAL STUDIES	23.5	30.3	6.8	2.9	11.4	8.5	7.65
FERGUSON-FLORISSANT R-II	BERKELEY MIDDLE	19.1	22.4	3.3	7.3	18	10.7	7
FERGUSON-FLORISSANT R-II	DUCHESNE ELEM.	27.8	33.1	5.3	21.7	29.6	7.9	6.6
ST. LOUIS CITY	OAK HILL ELEM.	9.1	20.6	11.5	22.2	23.9	1.7	6.6
CONFLUENCE ACADEMIES	GRAND CENTER ARTS ACAD MIDDLE	28.2	38.5	10.3	19.2	21.8	2.6	6.45
ST. LOUIS CITY	COLLEGIATE SCHOOL OF MED/BIO	88.4	91.3	2.9	64.8	74	9.2	6.05
LA SALLE CHARTER SCHOOL	LA SALLE CHARTER SCHOOL	15.3	17.5	2.2	4.5	13.6	9.1	5.65
HAZELWOOD	HAZELWOOD CENTRAL HIGH	36.2	35.4	-0.8	27.5	39.4	11.9	5.55
HAZELWOOD	CENTRAL MIDDLE	20	22.3	2.3	14.3	22.6	8.3	5.3
FERGUSON-FLORISSANT R-II	LEE HAMILTON ELEM.	21.1	26.3	5.2	11.9	17	5.1	5.15

Highest Growth Schools in Selected Districts, All Students, 2019 (≥ 52 averaged growth NCE)

LEA	School	English Language Arts					Mathematics					Avg Growth
		% Proficient or Advanced			Growth		% Proficient or Advanced			Growth		
		2018	2019	Change	2018	2019	2018	2019	Change	2018	2019	
ST. LOUIS CITY	FROEBEL ELEM.	15	14.5	-0.5	50.0	53.3	35.6	27.3	-8.3	54.8	59.2	56.2
HAZELWOOD	BROWN ELEM.	44.5	41.6	-2.9	51.9	53.2	41.9	44.0	2.1	55.5	55.0	54.1
RITENOUR	MARION ELEM.	46.4	43.4	-3	52.8	53.1	51.2	50.6	-0.6	54.6	54.6	53.9
HAZELWOOD	LAWSON ELEM.	35.6	39.5	3.9	51.7	51.9	37.5	36.2	-1.3	52.0	54.3	53.1
UNIVERSITY CITY	BARBARA JORDAN ELEM.	31.2	37.9	6.7	53.0	52.9	21.3	34.5	13.2	52.9	52.8	52.8
LAFAYETTE PREPARATORY ACADEMY	LAFAYETTE PREPARATORY ACADEMY	42.2	54.1	11.9	50.0	52.1	31.3	41.5	10.2	52.7	53.2	52.6
ST. LOUIS CITY	OAK HILL ELEM.	9.1	20.6	11.5	50.0	50.0	22.2	23.9	1.7	50.0	54.5	52.3
RIVERVIEW GARDENS	MEADOWS ELEM.	22.7	16.7	-6	52.8	52.1	22.0	16.9	-5.1	50.0	52.4	52.2
ST LOUIS LANG IMMERSION SCHOOL	ST LOUIS LANG IMMERSION MARINE	36.4	38.3	1.9	52.2	52.7	37.2	39.3	2.1	52.0	51.7	52.2
FERGUSON-FLORISSANT R-II	AIRPORT ELEM.	25	18.1	-6.9	52.9	52.0	12.0	9.7	-2.3	50.0	52.3	52.2
ST. LOUIS CITY	BUDER ELEM.	25.6	26.1	0.5	50.0	50.0	40.8	32.7	-8.1	54.7	54.3	52.1
JENNINGS	NORTHVIEW ELEM.	22	21.6	-0.4	50.9	51.4	19.6	21.7	2.1	51.4	52.7	52.1
RIVERVIEW GARDENS	MOLINE ELEM.	28.3	22.4	-5.9	51.4	51.6	23.3	15.8	-7.5	53.0	52.5	52.0
KIPP ST LOUIS PUBLIC SCHOOLS	KIPP INSPIRE ACADEMY	24.1	23.5	-0.6	50.0	51.6	24.6	19.5	-5.1	52.5	52.4	52.0
CONFLUENCE ACADEMIES	SOUTH CITY	32.6	30.1	-2.5	52.1	51.7	33.8	27.8	-6	52.2	52.3	52.0

Schools with Single-Digit Proficiency Rates, All Students, 2019

District	School	Type	English	Math
CONFLUENCE ACADEMIES	OLD NORTH	Both Subjects	8.2	9.5
	CONFLUENCE PREPARATORY ACADEMY	Math		1.8
	GRAND CENTER ARTS ACADEMY HIGH	Math		7
	ASPIRE ACADEMY	Math		4.8
EAGLE COLLEGE PREP ENDEAVOR	EAGLE GRAVOIS PARK	English	4.3	
	EAGLE FOX PARK	English	8.5	
FERGUSON-FLORISSANT R-II	MCCLUER HIGH	Math		4.9
	MCCLUER SOUTH-BERKELEY HIGH	Math		9
	FERGUSON MIDDLE	Math		9.4
	AIRPORT ELEM.	Math		9.7
HAWTHORN LEADERSHIP SCHL GIRLS	Hawthorn High School	Math		7
HAZELWOOD	SOUTHEAST MIDDLE	Math		7.1
	ARROWPOINT ELEM.	Math		6.2
NORMANDY SCHOOLS COLLABORATIVE	NORMANDY HIGH	Math		6.2
	7th and 8th Grade Center	Math		1.9
	BARACK OBAMA ELEMENTARY SCHOOL	Math		7.6
	LUCAS CROSSING ELEM. COMPLEX	Math		6.5
RIVERVIEW GARDENS	KOCH ELEM.	Both Subjects	6.6	5.3
	RIVERVIEW GARDENS SR. HIGH	Math		7.2
	R. G. CENTRAL MIDDLE	Math		4.4
	DANFORTH ELEM.	Math		4.6
	GIBSON ELEM.	Math		7.2
	HIGHLAND ELEM.	Math		8.6
THE ARCH COMMUNITY SCHOOL	THE ARCH COMMUNITY SCHOOL	Both Subjects	3.4	-0.1
THE BIOME	THE BIOME	Math		7.2

Schools with Single-Digit Proficiency Rates, All Students, 2019

District	School	Type	English	Math
ST. LOUIS CITY	NAHED CHAPMAN NEW AMERICAN ACA	Both Subjects	0	0
	JEFFERSON ELEM.	Both Subjects	0	0
	PEABODY ELEM.	Both Subjects	0	0
	CLAY ELEM.	Both Subjects	1.9	3.9
	WALBRIDGE ELEM. COMMUNITY ED.	Both Subjects	2.6	2.6
	COLUMBIA ELEM. COMM. ED. CTR.	Both Subjects	4.6	1.5
	ASHLAND ELEM. AND BR.	Both Subjects	4.9	1.2
	YEATMAN-LIDDELL MIDDLE SCHOOL	Both Subjects	5	3.8
	FORD-FORD BR. ELEM. COMM. ED.	Both Subjects	5.4	1.8
	HERZOG ELEM.	Both Subjects	5.5	1
	EARL NANCE, SR. ELEM.	Both Subjects	5.5	4.2
	FANNING MIDDLE COMMUNITY ED.	Both Subjects	5.6	4.9
	DUNBAR AND BR.	Both Subjects	5.8	5.8
	WASHINGTON MONTESSORI	Both Subjects	6.3	6.3
	VASHON HIGH	Both Subjects	6.6	0
	FARRAGUT ELEM.	Both Subjects	6.6	6.5
	BEAUMONT CTE HIGH SCHOOL	Both Subjects	7.1	1.6
	HICKEY ELEM.	Both Subjects	7.3	2.9
	LYON AT BLOW ELEM.	Both Subjects	7.3	6.1
	HENRY ELEM.	Both Subjects	7.6	9
	MONROE ELEM.	Both Subjects	8.3	6.5
	LACLEDE ELEM.	Both Subjects	8.5	5.7
	COLE ELEM.	Both Subjects	8.7	4.7
	GEORGE WASHINGTON CARVER ELEM	Both Subjects	9.1	2.6
	ELIAS MICHAEL ELEM.	English	3.1	
	BRYAN HILL ELEM.	English	4.6	
	TRANSPORTATION AND LAW	English	6.8	
	HAMILTON ELEM. COMMUNITY ED.	English	6.9	
	SHENANDOAH ELEM.	English	9.8	
	COMMUNITY ACCESS JOB TRAINING	Math		-0.1
	CARNAHAN SCH. OF THE FUTURE	Math		8.1
	SUMNER HIGH	Math		0
	CARR LANE VPA MIDDLE	Math		7.4
	GATEWAY MIDDLE	Math		5.2
	ACAD OF ENTRE STDY@LOUVERTURE	Math		6.6
	LONG MIDDLE COMMUNITY ED. CTR.	Math		5
HUMBOLDT ACAD OF HIGHER LRNING	Math		9.3	
WOODWARD ELEM.	Math		4.1	

Schools with Single-Digit Proficiency Rates, Black Students, 2019

District	School	Type	English	Math
CONFLUENCE ACADEMIES	OLD NORTH	Both Subjects	8.4	9.6
	CONFLUENCE PREPARATORY ACADEMY	Math		1.9
	GRAND CENTER ARTS ACADEMY HIGH	Math		3.5
	GRAND CENTER ARTS ACAD MIDDLE	Math		8.5
	ASPIRE ACADEMY	Math		4.4
EAGLE COLLEGE PREP ENDEAVOR	EAGLE GRAVOIS PARK	English	4.6	
	EAGLE FOX PARK	English	8.9	
FERGUSON-FLORISSANT R-II	CENTRAL ELEM.	English	9	
	MCCLUER HIGH	Math		4.5
	FERGUSON MIDDLE	Math		8.3
	AIRPORT ELEM.	Math		7.4
	BERMUDA ELEM.	Math		8.5
GATEWAY SCIENCE ACAD/ST LOUIS	WALNUT GROVE ELEM.	Math		8.6
	GATEWAY SCIENCE ACAD-SOUTH ELE	Math		8.1
HAWTHORN LEADERSHIP SCHL GIRLS	Hawthorn High School	Math		2.7
HAZELWOOD	EAST MIDDLE	Math		9.8
	SOUTHEAST MIDDLE	Math		6.9
	ARROWPOINT ELEM.	Math		6.5
NORMANDY SCHOOLS COLLABORATIVE	NORMANDY HIGH	Math		6.5
	7th and 8th Grade Center	Math		1.4
	BARACK OBAMA ELEMENTARY SCHOOL	Math		7.2
	LUCAS CROSSING ELEM. COMPLEX	Math		6.5
RIVERVIEW GARDENS	KOCH ELEM.	Both Subjects	6.1	5.4
	RIVERVIEW GARDENS SR. HIGH	Math		7.3
	R. G. CENTRAL MIDDLE	Math		4.4
	DANFORTH ELEM.	Math		4.6
	GIBSON ELEM.	Math		7.4
THE ARCH COMMUNITY SCHOOL	HIGHLAND ELEM.	Math		8.1
	THE ARCH COMMUNITY SCHOOL	Both Subjects	0	-0.1
THE BIOME	THE BIOME	Math		4

Schools with Single-Digit Proficiency Rates, Black Students, 2019

District	School	Type	English	Math
ST. LOUIS CITY	NAHED CHAPMAN NEW AMERICAN ACA	Both Subjects	0	0
	JEFFERSON ELEM.	Both Subjects	0	0
	ELIAS MICHAEL ELEM.	Both Subjects	0	0
	PEABODY ELEM.	Both Subjects	0	0
	CLAY ELEM.	Both Subjects	2	4
	WALBRIDGE ELEM. COMMUNITY ED.	Both Subjects	2.6	2.6
	COLUMBIA ELEM. COMM. ED. CTR.	Both Subjects	4.6	1.5
	ASHLAND ELEM. AND BR.	Both Subjects	4.9	1.2
	YEATMAN-LIDDELL MIDDLE SCHOOL	Both Subjects	5.1	3.8
	FORD-FORD BR. ELEM. COMM. ED.	Both Subjects	5.4	1.8
	FANNING MIDDLE COMMUNITY ED.	Both Subjects	5.5	4
	HERZOG ELEM.	Both Subjects	5.5	1
	EARL NANCE, SR. ELEM.	Both Subjects	5.5	4.2
	BEAUMONT CTE HIGH SCHOOL	Both Subjects	5.8	0
	DUNBAR AND BR.	Both Subjects	5.8	5.8
	MONROE ELEM.	Both Subjects	6.1	4
	WASHINGTON MONTESSORI	Both Subjects	6.3	6.3
	VASHON HIGH	Both Subjects	6.6	0
	FARRAGUT ELEM.	Both Subjects	6.6	6.5
	LYON AT BLOW ELEM.	Both Subjects	6.8	3.4
	WOERNER ELEM.	Both Subjects	7.1	5.3
	HICKEY ELEM.	Both Subjects	7.3	2.9
	HENRY ELEM.	Both Subjects	7.6	9
	COLE ELEM.	Both Subjects	7.8	4.8
	LONG MIDDLE COMMUNITY ED. CTR.	Both Subjects	8.2	1.1
	LACLEDE ELEM.	Both Subjects	8.5	5.7
	GEORGE WASHINGTON CARVER ELEM	Both Subjects	9.2	2.6
	WOODWARD ELEM.	Both Subjects	9.4	2.3
	GATEWAY MIDDLE	Both Subjects	9.7	4.1
	MERAMEC ELEM.	Both Subjects	9.8	8.2
	BRYAN HILL ELEM.	English	4.6	
	TRANSPORTATION AND LAW	English	7	
	HAMILTON ELEM. COMMUNITY ED.	English	7.1	
	BUDER ELEM.	English	7.9	
	SHENANDOAH ELEM.	English	8.5	
	COMMUNITY ACCESS JOB TRAINING	Math		0
	CARNAHAN SCH. OF THE FUTURE	Math		6.6
	SUMNER HIGH	Math		0
	BUSCH MS CHARACTER & ATHLETICS	Math		7.8
	CARR LANE VPA MIDDLE	Math		7.3
ACAD OF ENTRE STDY@LOUVERTURE	Math		7	
COMPTON-DREW ILC MIDDLE	Math		9.1	
HUMBOLDT ACAD OF HIGHER LRNING	Math		8	
SHAW VISUAL/PERF. ARTS CTR.	Math		8.9	

Schools with $\geq 80\%$ Below Basic, All Students, 2019

District	School	Type	% Below Basic	
			ELA	Math
RIVERVIEW GARDENS	DANFORTH ELEM.	Math		81.4
ST. LOUIS CITY	FANNING MIDDLE COMMUNITY ED.	Both Subjects	54.2	80.9
	BEAUMONT CTE HIGH SCHOOL	Both Subjects	55.4	84.8
	CLAY ELEM.	Both Subjects	57.7	86.5
	VASHON HIGH	Both Subjects	60.4	93
	ASHLAND ELEM. AND BR.	Both Subjects	61	88.9
	ELIAS MICHAEL ELEM.	Both Subjects	65.6	93.8
	HERZOG ELEM.	Both Subjects	67.4	87
	YEATMAN-LIDDELL MIDDLE SCHOOL	Both Subjects	68.6	81.5
	PEABODY ELEM.	Both Subjects	72.7	92.7
	WALBRIDGE ELEM. COMMUNITY ED.	Both Subjects	75	90.8
	HICKEY ELEM.	Both Subjects	79.7	85.3
	NAHED CHAPMAN NEW AMERICAN ACA	Both Subjects	86.7	90
	SUMNER HIGH	Math		86.5
	MERAMEC ELEM.	Math		82.6
THE ARCH COMMUNITY SCHOOL	THE ARCH COMMUNITY SCHOOL	Both Subjects	69	96.6

Schools with $\geq 80\%$ Below Basic, Black Students, 2019

District	School	Type	% Below Basic	
			ELA	Math
RIVERVIEW GARDENS	DANFORTH ELEM.	Math		81.3
ST. LOUIS CITY	CLAY ELEM.	Both Subjects	56	88
	FANNING MIDDLE COMMUNITY ED.	Both Subjects	57.5	84.1
	BEAUMONT CTE HIGH SCHOOL	Both Subjects	59.6	84.4
	VASHON HIGH	Both Subjects	61	92.9
	ASHLAND ELEM. AND BR.	Both Subjects	61	88.9
	LONG MIDDLE COMMUNITY ED. CTR.	Both Subjects	67.1	81.2
	MERAMEC ELEM.	Both Subjects	67.2	83.6
	HERZOG ELEM.	Both Subjects	67.4	87
	YEATMAN-LIDDELL MIDDLE SCHOOL	Both Subjects	68.6	81.3
	PEABODY ELEM.	Both Subjects	72.7	92.7
	ELIAS MICHAEL ELEM.	Both Subjects	75	95.8
	WALBRIDGE ELEM. COMMUNITY ED.	Both Subjects	75	90.8
	HICKEY ELEM.	Both Subjects	79.7	85.3
	NAHED CHAPMAN NEW AMERICAN ACA	Both Subjects	95.5	96.4
	SUMNER HIGH	Math		86.5
THE ARCH COMMUNITY SCHOOL	THE ARCH COMMUNITY SCHOOL	Both Subjects	73.1	96.2

Accountability for Results:

What are the odds that schools improve over time?

Two thirds of the state's lowest performing schools in 2015 are still at the bottom in 2019

St. Louis City accounts for 28% of all of the students in these schools statewide.

Schools in Bottom Decile of ELA and Math Proficiency

Note: This means the percentage may be less than 10

	Total Schools (2015)	Bottom Decile (2015)	Still Bottom Decile (2019)	% in Bottom Decile	% of all Bottom Decile	% Persisting in Bottom Decile	Total Students	Students in Persistently Low Perf.	% in Persistently Low Perf.	% of all in Persistently Low Perf.
State	1679	118	78	7%	N/A	66%	880248	26521	3%	N/A
County	204	31	23	15%	26%	74%	137192	8689	6%	33%
ST. LOUIS CITY	53	34	31	64%	29%	91%	19778	7337	37%	28%
HAZELWOOD	28	2	1	7%	2%	50%	17066	343	2%	1%
FERGUSON-FLORISSANT R-II	20	10	6	50%	8%	60%	9950	2155	22%	8%
JENNINGS	6	1	0	17%	1%	0%	2430	0	0%	0%
NORMANDY SCHOOLS COLLABORATI'	5	2	2	40%	2%	100%	3197	1235	39%	5%
RITENOUR	8	0	0	0%	0%	N/A	6247	0	0%	0%
RIVERVIEW GARDENS	11	10	9	91%	8%	90%	4903	3294	67%	12%
UNIVERSITY CITY	5	0	0	0%	0%	N/A	2593	0	0%	0%
Charters	18	4	4	22%	3%	100%	11446	1149	10%	4%



THE
OPPORTUNITY
TRUST